



CABLE GLAND
KEIGLAND®
 ケイクランド

1. CABLE GLAND

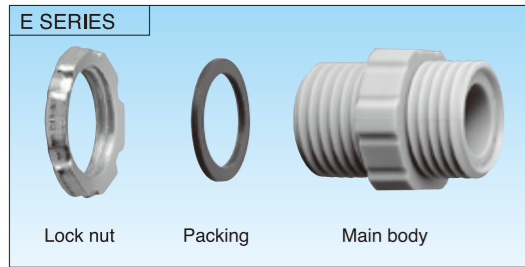
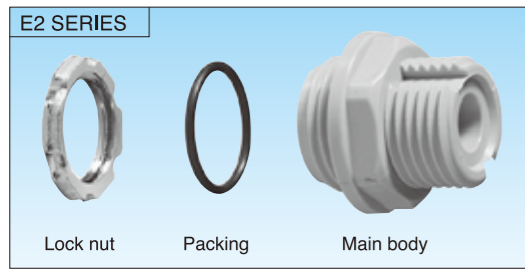
- Metallic Cable gland
- Non-metallic Cable gland
- Designed for a single cable / multiple cables

2. EMS - Multiple cable clamping kit

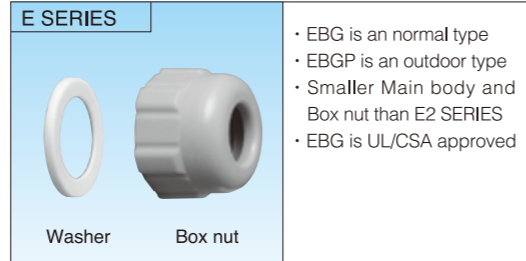
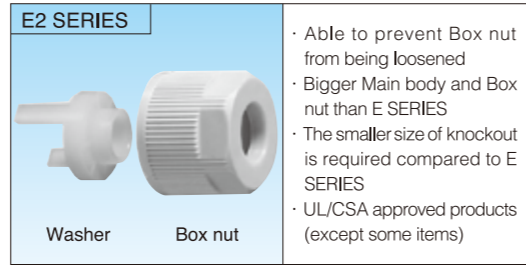
- Possible to reduce workload
- Simple assembly method
- Possible to assemble the kit after connecting cables and connectors
- Excellent space efficiency for cable installation
- The availability of a wide range of Packing provides multi-purpose applications with a variety of cable combinations

NON-METALLIC CABLE GLAND

E SERIES, E2 SERIES



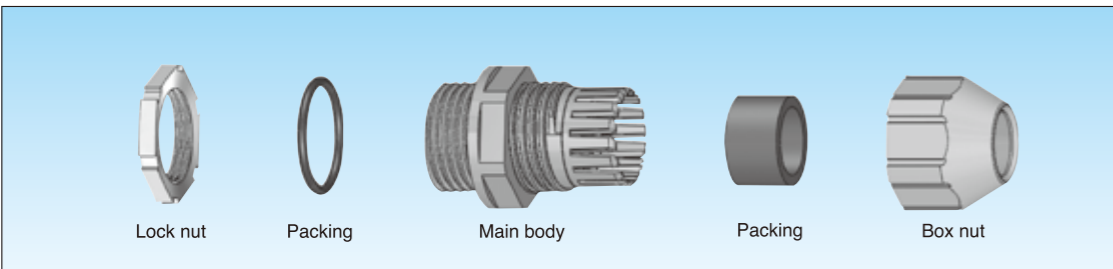
TYPE OF PACKING



- Able to prevent Box nut from being loosened
- Bigger Main body and Box nut than E SERIES
- The smaller size of knockout is required compared to E SERIES
- UL/CSA approved products (except some items)

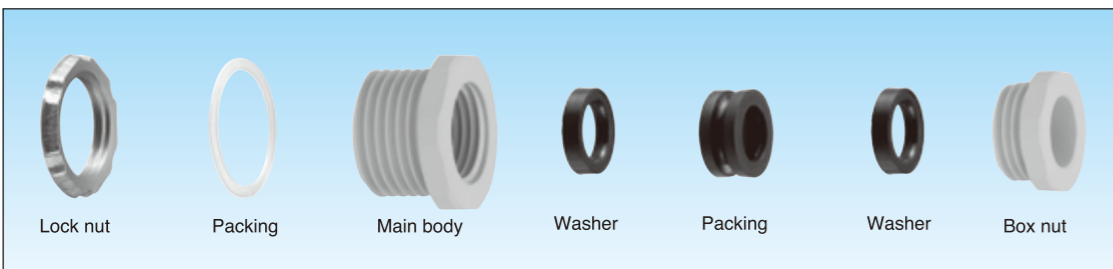
- EBG is a normal type
- EBGp is an outdoor type
- Smaller Main body and Box nut than E2 SERIES
- EBG is UL/CSA approved

E5 SERIES



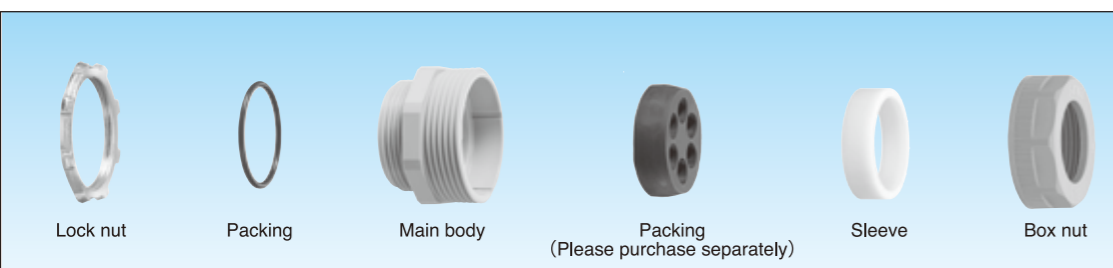
- Able to prevent Box nut from being loosened
- Suitable for the wide range of cable outside dia.
- The size of Main body and Box nut is Similar to E SERIES
- Sunlight resistant

ES SERIES



- Compact design

EM3 SERIES



- Cable glands for multiple cables
- Able to prevent Box nut from being loosened
- Note;Packing is separately available.

E SERIES, E2 SERIES

NOTES

- Max. and Min.Cable outside diameter to be inserted; Refer to the page of the required type
- Standard color ; Light Gray
- * Black type is also available
- Regardless of the color of cable glands, the material / color of Lock Nut is SPHC / Metallic
- Please contact us should Plastic Lock Nut be required

UL/CSA

- UL/CSA standards apply only to Cable outside diameter 8mm or bigger size
- UL/CSA standards does not apply to Cable outside diameter 7mm or smaller sizes.
- In terms of EBG, EBG1416 or bigger sizes comply with UL

INSTRUCTION FOR ASSEMBLY OF LOCK NUT

- When tightening LOCK NUT, moderate Torque is required. Contact us if the instruction is required.
- When UL / CSA applies to items on order, refer to 「ASSEMBLY INSTRUCTIONS」 attached to / enclosed in a shipping package

MATERIAL OF KEIGLAND

PART NAME	MATERIAL
Main body	PA
Packing	NBR
Washer	PA
Box nut	PA
Packing	NBR
Lock nut	SPHC

SAFEKEEPING

- In terms of Light gray types; take them out of shipping cartons and keep them by the different means of storage as soon as goods are delivered. Otherwise, the goods are likely to yellow.

E5 SERIES

NOTES

- Max. and Min.Cable outside diameter to be inserted; Refer to the page of the required type
- Standard color ; Light Gray
- * Black type is also available
- Regardless of the color of cable glands, the material / color of Lock Nut is SPHC / Metallic
- Please contact us should Plastic Lock Nut be required
- Sunlight resistant

INSTRUCTION FOR ASSEMBLY OF LOCK NUT

- When tightening LOCK NUT, moderate Torque is required. Contact us if the instruction is required.

MATERIAL OF KEIGLAND

PART NAME	MATERIAL
Main body	PA
Packing	NBR
Box nut	PA
Packing	NBR
Lock nut	SPHC

SAFEKEEPING

Refer to E SERIES, E2 SERIES section (SAFEKEEPING article)

ES SERIES

NOTES

- Max. and Min.Cable outside diameter to be inserted; Refer to the page of the required type
- Standard color ; Light Gray
- * Black type is also available
- Regardless of the color of cable glands, the material / color of Lock Nut is SPHC / Metallic
- Please contact us should Plastic Lock Nut be required

INSTRUCTION FOR ASSEMBLY OF LOCK NUT

- When tightening LOCK NUT, moderate Torque is required. Contact us if the instruction is required.

MATERIAL OF KEIGLAND

PART NAME	MATERIAL
Main body	PA
Packing	NBR
Washer	PA
Box nut	PA
Packing	PA
Lock nut	SPHC

SAFEKEEPING

Refer to E SERIES, E2 SERIES section (SAFEKEEPING article)

EM3 SERIES

NOTES

- Max. and Min.Cable outside diameter to be inserted; Refer to the page of the required type
- Material / color of Lock Nut is SPHC / Metallic
- Please contact us should Plastic Lock Nut be required

INSTRUCTION FOR ASSEMBLY OF LOCK NUT

- When tightening LOCK NUT, moderate Torque is required. Contact us if the instruction is required.

MATERIAL OF KEIGLAND

PART NAME	MATERIAL
Main body	PA
Packing	NBR
Sleeve	PA
Box nut	PA
Packing	NBR
Lock nut	SPHC

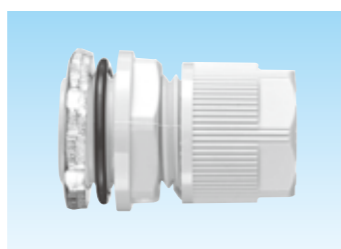
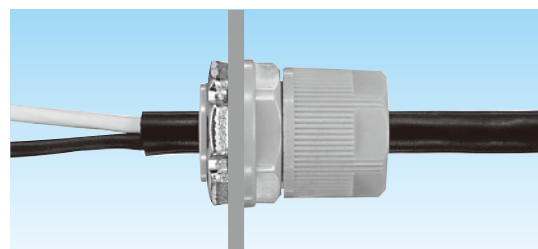
SAFEKEEPING

Refer to E SERIES, E2 SERIES section (SAFEKEEPING article)

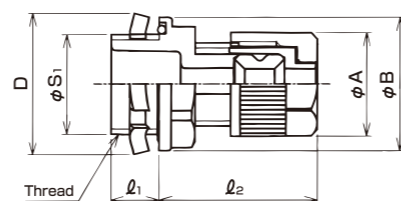
E2 SERIES CABLE GLAND FOR KNOCKOUT

MAIN MATERIAL	FEATURE	FEATURE	FEATURE	ENVIRONMENT	ENVIRONMENT	FLAMMABILITY	TEMPERATURE RANGE
PA66	IP67	Oil resistance	Hold up to vibration	HALOGEN FREE	RoHS	UL94V2	Lowest -20°C ~Highest 90°C

PARALLEL PIPE THREAD - EXTERNAL THREAD



- Straight cable gland
- Designed for knockout of wiring boxes.
- The size of knockout required; as indicated in the chart below



STRAIGHT STYLE

[LIGHT GRAY (STANDARD COLOR) / BLACK]



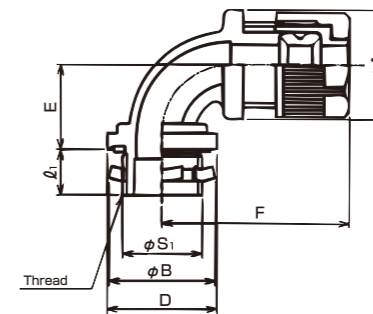
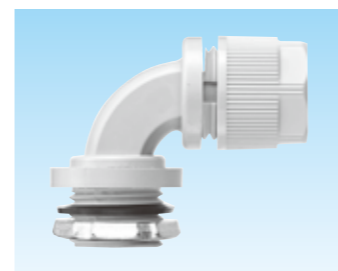
Delivery		Item number		Cable outside diameter to be inserted		Packing number	φ A	φ B / D	l ₁	l ₂	Knockout diameter	Thread JIS B 0202		Weight (g/pc)	Qty / Package
Light gray	Black	Light gray	Black	Max.	Min.							φ S ₁	Nominal size		
○	○	E2BG 04 16	E2BG 04 16BK	4	2	4	16.0	29.0	10.0	29	21.0	20.9	G1/2	15	20
○	○	E2BG 06 16	E2BG 06 16BK	6	3	6	21.7	29.0	10.0	33	21.0	20.9	G1/2	19	20
○	○	E2BG 08 16	E2BG 08 16BK	8	4	8	24.6	29.0	10.0	36	21.0	20.9	G1/2	21	20
○	○	E2BG 10 16	E2BG 10 16BK	10	6	10	27.2	29.0	10.0	35	21.0	20.9	G1/2	23	20
○	○	E2BG 12 16	E2BG 12 16BK	12	8	12	30.0	29.0	10.0	35	21.0	20.9	G1/2	23	20
○	○	E2BG 12 22	E2BG 12 22BK	12	8	12	30.0	35.3	10.0	35	27.0	26.4	G3/4	26	20
○	○	E2BG 15 16	E2BG 15 16BK	※15	12	16	36.0	35.3	10.0	37	21.0	20.9	G1/2	31	20
○	○	E2BG 16 22	E2BG 16 22BK	16	12	16	36.0	35.3	10.0	37	27.0	26.4	G3/4	34	20
○	○	E2BG 20 22	E2BG 20 22BK	20	16	20	42.0	42.0	10.0	39	27.0	26.4	G3/4	41	20
○	○	E2BG 24 28	E2BG 24 28BK	24	20	24	48.0	48.0	14.0	40	34.0	33.2	G1	58	10
○	○	E2BG 26 28	E2BG 26 28BK	※26	24	28	53.5	53.5	14.0	43	34.0	33.2	G1	74	10
○	○	E2BG 28 36	E2BG 28 36BK	28	24	28	53.5	53.5	14.0	43	42.0	41.9	G1-1/4	80	10
○	○	E2BG 32 36	E2BG 32 36BK	32	28	32	58.9	58.9	14.0	45	42.0	41.9	G1-1/4	90	10
○	○	E2BG 34 36	E2BG 34 36BK	※34	32	36	64.1	64.1	14.0	47	42.0	41.9	G1-1/4	93	10
○	○	E2BG 36 42	E2BG 36 42BK	36	32	36	64.1	64.1	16.0	47	48.0	47.8	G1-1/2	116	5
○	○	E2BG 40 42	E2BG 40 42BK	40	36	40	71.3	71.3	16.0	48	48.0	47.8	G1-1/2	132	5
○	○	E2BG 40 54	E2BG 40 54BK	40	36	40	71.3	71.3	16.0	48	60.0	59.6	G2	150	2
—	—	E2BG 44 54	E2BG 44 54BK	44	40										
—	—	E2BG 48 54	E2BG 48 54BK	48	44										
—	—	E2BG 52 54	E2BG 52 54BK	52	48										

- By removing a sheath of a cable, items marked with ※ in the chart above can be adapted for another outside diameter of a cable; φ 15 can be adapted for φ 16, φ 26 can be adapted for φ 28, φ 34 can be adapted for φ 36
- Refer to the page for EBG. If EBG 44 54, EBG 48 54, EBG 52 54 are suitable for your requirements, they may be substitutes for E2BG 44 54, E2BG 48 54, E2BG 52 54.

E2 SERIES CABLE GLAND FOR KNOCKOUT

MAIN MATERIAL	FEATURE	FEATURE	FEATURE	ENVIRONMENT	ENVIRONMENT	FLAMMABILITY	TEMPERATURE RANGE
PA66	IP67	Oil resistance	Hold up to vibration	HALOGEN FREE	RoHS	UL94V2	Lowest -20°C ~Highest 90°C

PARALLEL PIPE THREAD - EXTERNAL THREAD



- Cable gland designed in 90 degree angle style
- Designed for knockout of wiring boxes
- The size of knockout required; as indicated in the chart below

90 DEGREE ANGLE STYLE

[LIGHT GRAY]



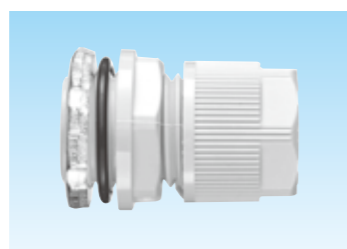
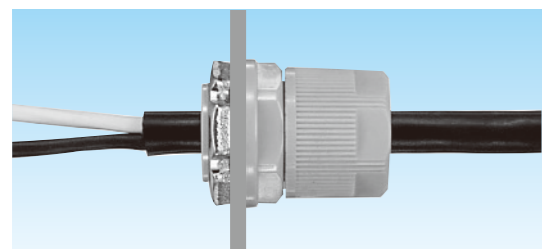
Delivery		Item number		Cable outside diameter to be inserted		Packing number	φ A	φ B / D	E	F	l ₁	Knockout diameter	Thread JIS B 0202		Weight (g/pc)	Qty / Package
Light gray	Black	Light gray	Black	Max.	Min.								φ S ₁	Nominal size		
○	○	E29BG 06 16		6	3	6	24.6	29.0	22	44	12	21.0	20.9	G1/2	23	20
○	○	E29BG 08 16		8	4	8	24.6	29.0	22	47	12	21.0	20.9	G1/2	25	20
○	○	E29BG 10 16		10	6	10	28.8	29.0	24	49	12	21.0	20.9	G1/2	28	20
○	○	E29BG 12 16		12	8	12	30.0	29.0	24	49	12	21.0	20.9	G1/2	30	20
○	○	E29BG 14 16		※14	12	16	40.8	37.0	28	56	12	21.0	20.9	G1/2	46	20
○	○	E29BG 16 22		16	12	16	40.8	37.0	28	56	12	27.0	26.4	G3/4	49	20
○	○	E29BG 19 22		※19	16	20	42.0	37.0	28	58	12	27.0	26.4	G3/4	60	10
○	○	E29BG 24 28		24	20	24	48.3	45.5	32	62	14	34.0	33.2	G1	80	10
○	○	E29BG 28 36		28	24	28	57.3	56.0	37	70	14	42.0	41.9	G1-1/4	111	10
○	○	E29BG 32 36		32	28	32	58.9	56.0	37	72	14	42.0	41.9	G1-1/4	116	5
○	○	E29BG 36 42		36	32	36	67.7	64.0	43	80	16	48.0	47.8	G1-1/2	159	5

- By removing a sheath of a cable, items marked with ※ in the chart above can be adapted for another outside diameter of a cable; φ 14 can be adapted for φ 16, φ 19 can be adapted for φ 20

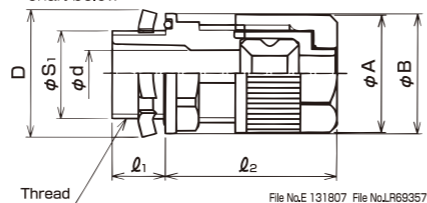
E2 SERIES CABLE GLAND FOR KNOCKOUT

MAIN MATERIAL	FEATURE	FEATURE	FEATURE	ENVIRONMENT	ENVIRONMENT	FLAMMABILITY	TEMPERATURE RANGE
PA66	IP67	Oil resistance	Hold up to vibration	HALOGEN FREE	RoHS	UL94V2	Lowest -20°C ~Highest 90°C

Type E2BM



- Straight cable gland
- Designed for knockout of wiring boxes.
- The size of knockout required; as indicated in the chart below



File No.E 131807 File No.LR69357
 QUALITY STANDARD QUALITY STANDARD
 UL LISTED SP

[METRIC THREAD - EXTERNAL THREAD / LIGHT GRAY]

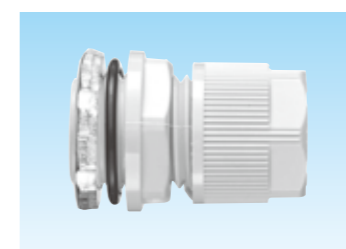
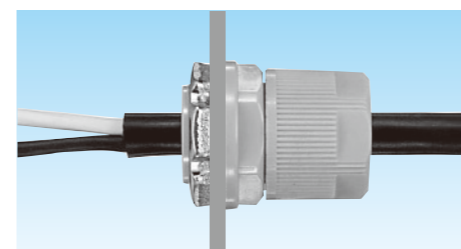
Deliv-ery	Item number	Cable outside diameter to be inserted		Packing number	φ A	φ B D	φ d	L 1	L 2	Knockout diameter	Thread JIS C 8463		Weight (g/pc)	Qty / Package
		Max.	Min.								φ S 1	Nominal size		
○	E2BM 04 20	4	2	4	16.0	29.0	4.3	10	29	20.0	19.9	M20×1.5	16	20
○	E2BM 06 16	6	3	6	21.7	23.0	6.3	10	33	16.0	15.9	M16×1.5	14	20
○	E2BM 06 20	6	3	6	21.7	29.0	6.3	10	33	20.0	19.9	M20×1.5	20	20
③	E2BM 06 25	6	3	6	21.7	36.0	6.3	10	34	25.0	24.9	M25×1.5	26	20
○	E2BM 08 16	8	4	8	24.6	24.3	8.3	10	36	16.0	15.9	M16×1.5	17	20
○	E2BM 08 20	8	4	8	24.6	29.0	8.3	10	36	20.0	19.9	M20×1.5	22	20
③	E2BM 08 25	8	4	8	24.6	36.0	8.3	10	36	25.0	24.9	M25×1.5	28	20
③	E2BM 10 16	10	6	10	27.2	26.5	10.2	10	35	16.0	15.9	M16×1.5	19	20
○	E2BM 10 20	10	6	10	27.2	29.0	10.3	10	35	20.0	19.9	M20×1.5	23	20
○	E2BM 12 20	12	8	12	30.0	29.0	12.3	10	35	20.0	19.9	M20×1.5	26	20
○	E2BM 12 25	12	8	12	30.0	36.0	12.3	10	36	25.0	24.9	M25×1.5	31	20
○	E2BM 12 32	12	8	12	30.0	44.0	12.3	12	36	32.0	31.9	M32×1.5	43	20
○	E2BM 14 20	※ 14	12	16	36.0	35.3	14.2	10	37	20.0	19.9	M20×1.5	33	20
○	E2BM 16 25	16	12	16	36.0	36.0	16.3	10	37	25.0	24.9	M25×1.5	37	20
○	E2BM 16 32	16	12	16	36.0	44.0	16.3	12	38	32.0	31.9	M32×1.5	48	10
○	E2BM 16 40	16	12	16	36.0	53.0	16.3	12	38	40.0	39.9	M40×1.5	61	10
○	E2BM 19 25	※ 19	16	20	42.0	42.0	19.2	10	39	25.0	24.9	M25×1.5	46	10
○	E2BM 20 32	20	16	20	42.0	44.0	20.4	12	40	32.0	31.9	M32×1.5	54	10
③	E2BM 20 40	20	16	20	42.0	53.0	20.4	12	40	40.0	39.9	M40×1.5	65	10
○	E2BM 24 32	24	20	24	48.0	48.0	24.4	12	41	32.0	31.9	M32×1.5	62	10
③	E2BM 24 40	24	20	24	48.0	53.0	24.4	12	41	40.0	39.9	M40×1.5	71	10
○	E2BM 26 32	※ 26	24	28	53.5	53.5	26.2	12	43	32.0	31.9	M32×1.5	74	10
○	E2BM 28 40	28	24	28	53.5	53.5	28.4	12	44	40.0	39.9	M40×1.5	88	10
○	E2BM 32 40	32	28	32	58.9	58.9	32.4	12	45	40.0	39.9	M40×1.5	92	10
③	E2BM 32 50	32	28	32	58.9	65.0	32.4	14	45	50.0	49.9	M50×1.5	117	5
○	E2BM 34 40	※ 34	32	36	64.1	64.1	34.2	12	47	40.0	39.9	M40×1.5	106	10
○	E2BM 36 50	36	32	36	64.1	65.0	36.4	14	47	50.0	49.9	M50×1.5	123	5
○	E2BM 40 50	40	36	40	71.3	71.3	40.4	14	49	50.0	49.9	M50×1.5	145	5
確	E2BM 40 63	40	36	40	71.3	79.0	40.4	14	49	63.0	62.9	M63×1.5	160	2
-	E2BM 44 63	44	40											
-	E2BM 48 63	48	40											
-	E2BM 52 63	52	48											

· By removing a sheath of a cable, items marked with ※ in the chart above can be adapted for another outside diameter of a cable; φ 14 can be adapted for φ 16, φ 19 can be adapted for φ 20, φ 26 can be adapted for φ 28, φ 34 can be adapted for φ 36

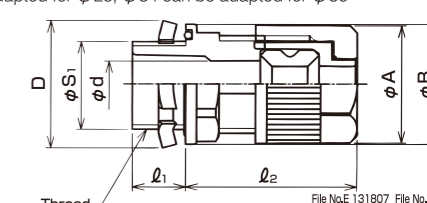
E2 SERIES CABLE GLAND FOR KNOCKOUT

MAIN MATERIAL	FEATURE	FEATURE	FEATURE	ENVIRONMENT	ENVIRONMENT	FLAMMABILITY	TEMPERATURE RANGE
PA66	IP67	Oil resistance	Hold up to vibration	HALOGEN FREE	RoHS	UL94V2	Lowest -20°C ~Highest 90°C

Type E2BPg



- By removing a sheath of a cable, items marked with ※ in the chart above can be adapted for another outside diameter of a cable; φ 14 can be adapted for φ 16, φ 19 can be adapted for φ 20, φ 26 can be adapted for φ 28, φ 34 can be adapted for φ 36



File No.E 131807 File No.LR69357
 QUALITY STANDARD QUALITY STANDARD
 UL LISTED SP

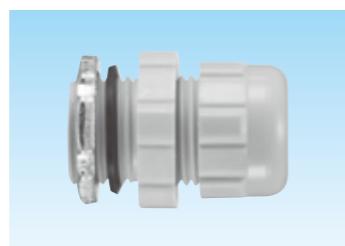
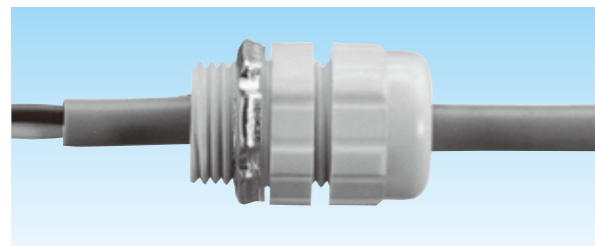
[Pg THREAD - EXTERNAL THREAD / LIGHT GRAY]

Deliv-ery	Item number	Cable outside diameter to be inserted		Packing number	φ A	φ B D	l 1	l 2	Knockout diameter	Thread DIN 40 430		Weight (g/pc)	Qty / Package	
		Max.	Min.							φ S 1	Nominal size			
○	E2BPg 06 09	6	3	6	21.7	22.0	10.0	33	16	15.2	Pg9	14	20	
○	E2BPg 08 09	8	4	8	24.6	24.3	10.0	36	16	15.2	Pg9	16	20	
○	E2BPg 08 11									18.6	Pg11	18	20	
○	E2BPg 08 13									21	20.4	Pg13.5	21	20
○	E2BPg 12 11	12	8	12	30.0	28.7	10.0	35	19	18.6	Pg11	22	20	
○	E2BPg 12 13									21	20.4	Pg13.5	25	20
○	E2BPg 12 16									23	22.5	Pg16	26	20
○	E2BPg 12 21	16	12	16	36.0	38.0	14.0	36	29	28.3	Pg21	32	20	
○	E2BPg 16 16									23	22.5	Pg16	33	20
○	E2BPg 16 21									29	28.3	Pg21	36	20
○	E2BPg 20 21	20	16	20	42.0	42.0	14.0	39	29	28.3	Pg21	45	10	
○	E2BPg 24 29	24	20	24	48.0	49.0	14.0	41	38	37.0	Pg29	62	10	
○	E2BPg 30 29	30	28	32	58.9	58.9	14.0	45	38	37.0	Pg29	84	10	

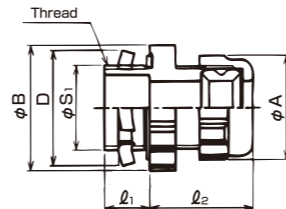
E SERIES CABLE GLAND FOR KNOCKOUT

MAIN MATERIAL	FEATURE	FEATURE	ENVIRONMENT	FLAMMABILITY	TEMPERATURE RANGE
PA6	IP67	Oil resistance	RoHS	UL94V0	Lowest -20°C ~Highest 90°C

PARALLEL PIPE THREAD - EXTERNAL THREAD



- Straight cable gland
- Designed for knockout of wiring boxes.



[LIGHT GRAY (STANDARD COLOR) / BLACK]

Delivery		Item number		Cable outside diameter to be inserted		Packing number	φ A	φ B D	l ₁	l ₂	Thread JIS B 0202		Weight (g/pc)	Qty / Package
Light gray	Black	Light gray	Black	Max.	Min.						φ S ₁	Nominal size		
○	○	EBG 06 12	EBG 06 12 BK	6	3	6	20.9	27.0	12	29	16.6	G3/8	14	20
○	○	EBG 06 16	EBG 06 16 BK								20.9	G1/2	19	20
○	○	EBG 08 12	EBG 08 12 BK	8	4	8	23.0	27.0	12	31	16.6	G3/8	15	20
○	○	EBG 08 16	EBG 08 16 BK								20.9	G1/2	20	20
○	○	EBG 12 16	EBG 12 16 BK	12	8	12	27.0	31.3	13	31	20.9	G1/2	22	20
○	○	EBG 12 22	EBG 12 22 BK								26.4	G3/4	27	20
○	○	EBG 14 16	EBG 14 16 BK	※ 14	12	16	32.4	32.4	13	35	20.9	G1/2	26	20
○	○	EBG 16 22	EBG 16 22 BK								26.4	G3/4	34	20
○	○	EBG 20 22	EBG 20 22 BK	20	16	20	37.8	38.9	14	37	26.4	G3/4	40	20
○	○	EBG 24 28	EBG 24 28 BK								33.2	G1	55	10
○	○	EBG 26 28	EBG 26 28 BK	※ 26	24	28	49.7	47.5	15	38	33.2	G1	65	10
○	○	EBG 28 36	EBG 28 36 BK								41.9	G1-1/4	75	10
○	○	EBG 32 36	EBG 32 36 BK	32	28	32	54.0	59.4	16	41	41.9	G1-1/4	80	10
○	○	EBG 34 36	EBG 34 36 BK								41.9	G1-1/4	90	10
○	○	EBG 36 42	EBG 36 42 BK	※ 34	32	36	59.4	67.0	16	42	47.8	G1-1/2	100	5
○	○	EBG 40 42	EBG 40 42 BK								47.8	G1-1/2	130	5
○	○	EBG 40 54	EBG 40 54 BK	40	36	40	68.0	79.9	18	48	59.6	G2	168	5
○	○	EBG 44 54	EBG 44 54 BK								52	G2	170	2
○	○	EBG 48 54	EBG 48 54 BK	44	40	44	72.4	79.9	18	56	59.6	G2	190	2
○	○	EBG 52 54	EBG 52 54 BK								56	G2	212	2
○	○	EBG 54 54	EBG 54 54 BK	48	44	48	77.8	79.9	18	60	59.6	G2	212	2
○	○	EBG 52 54	EBG 52 54 BK	52	48	52	83.2	79.9	18	60	59.6	G2	212	2

· By removing a sheath of a cable, items marked with ※ in the chart above can be adapted for another outside diameter of a cable; φ 14 can be adapted for φ 16, φ 26 can be adapted for φ 28, φ 34 can be adapted for φ 36

Pg THREAD - EXTERNAL THREAD

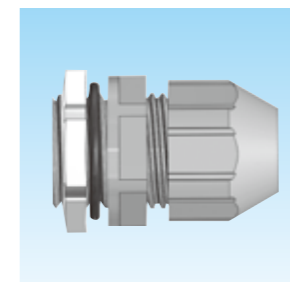
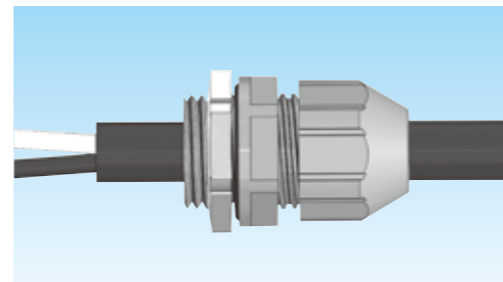
[LIGHT GRAY]

Delivery	Item number	Cable outside diameter to be inserted		Packing number	φ A	φ B D	l ₁	l ₂	Thread DIN 40 430		Weight (g/pc)	Qty / Package
		Max.	Min.						φ S ₁	Nominal size		
○	EBPg 08 09	8	4	8	23.0	23.0	10.5	31	15.2	Pg9	15	20
○	EBPg 08 11	8	4	8	23.0	27.0	10.5	31	18.6	Pg11	16	20
○	EBPg 08 13	8	4	8	23.0	29.2	11.5	31	20.4	Pg13.5	20	20
○	EBPg 12 13	12	8	12	27.0	29.2	11.5	31	20.4	Pg13.5	21	20
○	EBPg 12 16	12	8	12	27.0	31.3	11.5	31	22.5	Pg16	24	20
○	EBPg 16 16	16	12	16	32.4	32.4	11.5	34	22.5	Pg16	30	20
○	EBPg 16 21	16	12	16	32.4	38.0	13.0	34	28.3	Pg21	34	20

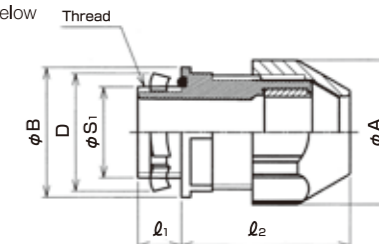
E5 SERIES OUTDOOR TYPE CABLE GLAND FOR KNOCKOUT

MAIN MATERIAL	FEATURE	FEATURE	FEATURE	FEATURE	ENVIRONMENT	ENVIRONMENT
PA6	IP67	Oil resistance	Hold up to vibration	Limited water resistance	HALOGEN FREE	RoHS

PARALLEL PIPE THREAD - EXTERNAL THREAD



- Straight cable gland
- Designed for knockout of wiring boxes
- The size of knockout required; as indicated in the chart below



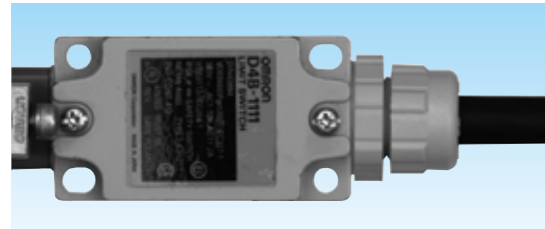
[LIGHT GRAY (STANDARD COLOR) / BLACK]

Delivery		Item number		Cable outside diameter to be inserted		Packing number	φ A	φ B D	l ₁	l ₂	Knockout diameter	Thread JIS B 0202		Weight (g/pc)	Qty / Package
Light gray	Black	Light gray	Black	Max.	Min.							φ S ₁	Nominal size		
☆	☆	E5BG 12 16	E5BG 12 16 BK	12	6										
☆	☆	E5BG 15 16	E5BG 15 16 BK	15	9										
☆	☆	E5BG 20 22	E5BG 20 22 BK	20	14										

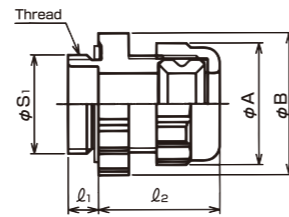
E SERIES CABLE GLAND FOR ELECTRIC DEVICES

MAIN MATERIAL	FEATURE	FEATURE	ENVIRONMENT	FLAMMABILITY	TEMPERATURE RANGE
PA6	IP67	Oil resistance	RoHS	UL94V0	Lowest -20°C ~Highest 90°C

PARALLEL PIPE THREAD - EXTERNAL THREAD



- Straight cable gland
- Designed for electric devices such as Limit switch / Hood.

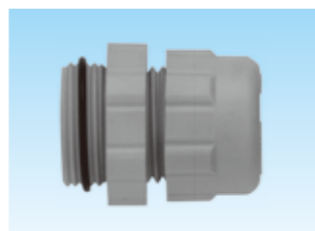
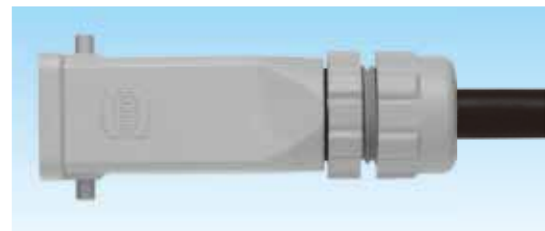


[LIGHT GRAY (STANDARD COLOR) / BLACK]

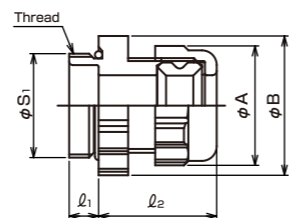
Delivery		Item number		Cable outside diameter to be inserted		Packing number	φ A	φ B	l ₁	l ₂	Thread JIS B 0202		Weight (g/pc)	Qty / Package
Light gray	Black	Light gray	Black	Max.	Min.						φ S ₁	Nominal size		
○	○	EOG 06 12	EOG 06 12 BK	6	3	6	20.9	27.0	7	29	16.6	G3/8	10	20
○	○	EOG 06 16	EOG 06 16 BK				31.3	8	20.9		G1/2	12	20	
○	○	EOG 08 12	EOG 08 12 BK	8	4	8	23.0	27.0	7	31	16.6	G3/8	11	20
○	○	EOG 08 16	EOG 08 16 BK				31.3	8	20.9		G1/2	13	20	
○	○	EOG 12 16	EOG 12 16 BK	12	8	12	27.0	31.3	8	31	20.9	G1/2	14	20
○	○	EOG 14 16	EOG 14 16 BK	※14	12	16	32.4	32.4	8	34	20.9	G1/2	19	20
○	○	EOG 16 22	EOG 16 22 BK	16	12		32.4	38.9	8	34	26.4	G3/4	22	20

· By removing a sheath of a cable, items marked with ※ in the chart above can be adapted for another outside diameter of a cable; φ 14 can be adapted for φ 16

Pg THREAD - EXTERNAL THREAD



- Straight cable gland
- Designed for electric devices such as Limit switch / Hood.



[LIGHT GRAY (STANDARD COLOR) / BLACK]

Delivery		Item number		Cable outside diameter to be inserted		Packing number	φ A	φ B	l ₁	l ₂	Thread JIS B 0202		Weight (g/pc)	Qty / Package
Light gray	Black	Light gray	Black	Max.	Min.						φ S ₁	Nominal size		
○	○	EOPg 08 11	EOPg 08 11 BK	8	4	8	23.0	25.3	6	31	18.6	Pg11	10	20
○	○	EOPg 08 13	EOPg 08 13 BK				27.0	7	31	20.4	Pg13.5	11	20	
○	○	EOPg 12 11	EOPg 12 11 BK	12	8	12	27.0	27.0	6	31	18.6	Pg11	12	20
○	○	EOPg 12 16	EOPg 12 16 BK				29.2	8	31	22.5	Pg16	14	20	
○	○	EOPg 16 16	EOPg 16 16 BK	16	12	16	32.4	32.4	8	34	22.5	Pg16	19	20
○	○	EOPg 20 21	EOPg 20 21 BK	20	16	20	37.8	35.6	8	37	28.3	Pg21	26	20

KEIFLEX

SANFLEKI ROBO

KEIGLAND

POWER GODZILLA

PLICA TUBE

SANPIPE

GRIPLOK

SANPARTS

SANCABLE

SANCLUBE

KEIFLEX

SANFLEKI ROBO

KEIGLAND

POWER GODZILLA

PLICA TUBE

SANPIPE

GRIPLOK

SANPARTS

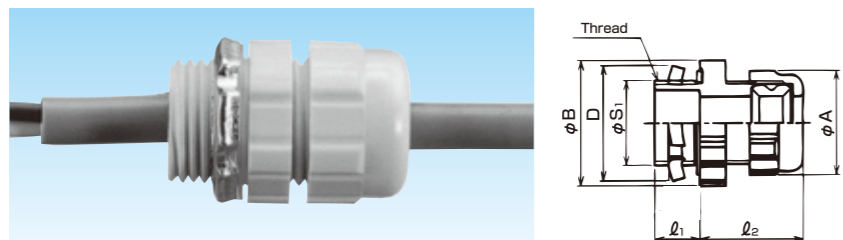
SANCABLE

SANCLUBE

E SERIES OUTDOOR TYPE CABLE GLAND FOR KNOCKOUT

MAIN MATERIAL	FEATURE	FEATURE	FEATURE	ENVIRONMENT	ENVIRONMENT	FLAMMABILITY	TEMPERATURE RANGE
PA6	IP67	Oil resistance	Limited water resistance	HALOGEN FREE	RoHS	UL94V2	Lowest -20°C ~Highest 90°C

PARALLEL PIPE THREAD - EXTERNAL THREAD



- Straight cable gland suitable for outdoor installation
- With outdoor type of Main body and Box nut
- Sunlight resistant
- Max. and Min. Cable outside diameter to be inserted; Refer to the chart below

[GRAY (STANDARD COLOR)]

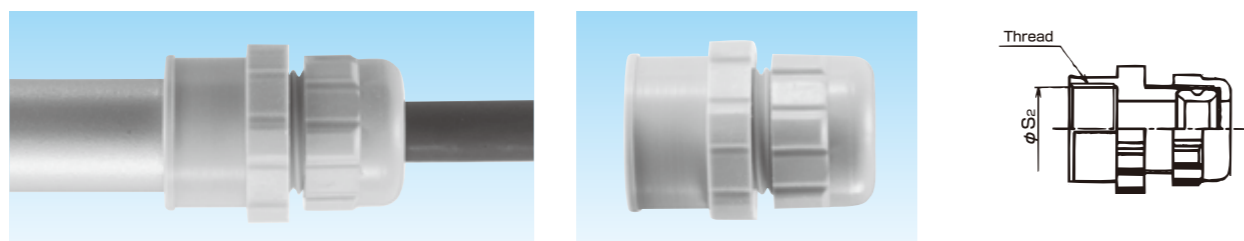
Delivery	Item number	Cable outside diameter to be inserted		Packing number	φ A	φ B D	l ₁	l ₂	Thread JIS B 0202		Weight (g/pc)	Qty / Package
		Max.	Min.						φ S ₁	Nominal size		
○	EBGP 06 12	6	3	6	20.9	27.0	12	29	16.6	G3/8	14	20
○	EBGP 06 16	6	3	6	20.9	31.3	13	29	20.9	G1/2	20	20
○	EBGP 08 12	8	4	8	23.0	27.0	12	31	16.6	G3/8	15	20
○	EBGP 08 16	8	4	8	23.0	31.3	13	31	20.9	G1/2	20	20
○	EBGP 12 16	12	8	12	27.0	31.3	13	31	20.9	G1/2	22	20
○	EBGP 12 22	12	8	12	27.0	38.9	14	31	26.4	G3/4	27	20
○	EBGP 14 16	※14	12	16	32.4	32.4	13	35	20.9	G1/2	24	20
○	EBGP 16 22	16	12	16	32.4	38.9	14	34	26.4	G3/4	34	20
○	EBGP 20 22	20	16	20	37.8	38.9	14	37	26.4	G3/4	40	20
○	EBGP 24 28	24	20	24	44.3	47.5	15	37	33.2	G1	55	10
○	EBGP 28 36	28	24	28	49.7	59.4	16	39	41.9	G1-1/4	75	10
○	EBGP 32 36	32	28	32	54.0	59.4	16	41	41.9	G1-1/4	80	10

· By removing a sheath of a cable, items marked with ※ in the chart above can be adapted for another outside diameter of a cable; φ 14 can be adapted for φ 16.

E SERIES OUTDOOR & BUSHING TYPE CABLE GLAND

MAIN MATERIAL	FEATURE	FEATURE	FEATURE	ENVIRONMENT	ENVIRONMENT	FLAMMABILITY	TEMPERATURE RANGE
PA6	IP67 (only for cable and cable gland)	Oil resistance	Limited water resistance	HALOGEN FREE	RoHS	UL94V2	Lowest -20°C ~Highest 90°C

FOR RIGID METAL CONDUIT



- Used for rigid steel conduit with thread
- Bushing type of Straight cable gland which is intended to clamp a cable at the end of a rigid steel conduit.
- With outdoor type of Main body and Box nut
- Sunlight resistant

- Should water resistance be required at the connection between the cable gland and a rigid steel conduit, use caulking compound to caulk the connection.

[SCREW THREAD FOR RIGID METAL CONDUIT AND FITTING - INTERNAL THREAD / GRAY]

Delivery	Item number	Cable outside diameter to be inserted		Packing number	Thread JIS B8305		Weight (g/pc)	Qty / Package
		Max.	Min.		φ S ₂	Nominal size		
○	08 16	8	4	8	19.0	CTG16	13	20
○	12 16	12	8	12	19.0	CTG16	16	20
○	12 22	12	8	12	24.5	CTG22	23	20
○	20 22	20	16	20	24.5	CTG22	31	10

[SCREW THREAD FOR RIGID METAL CONDUIT AND FITTING - INTERNAL THREAD / GRAY]

Delivery	Item number	Cable outside diameter to be inserted		Packing number	Thread JIS B8305		Weight (g/pc)	Qty / Package
		Max.	Min.		φ S ₂	Nominal size		
○	12 19	12	8	12	17.8	CTC19	17	20
○	20 25	20	16	20	24.1	CTC25	30	10

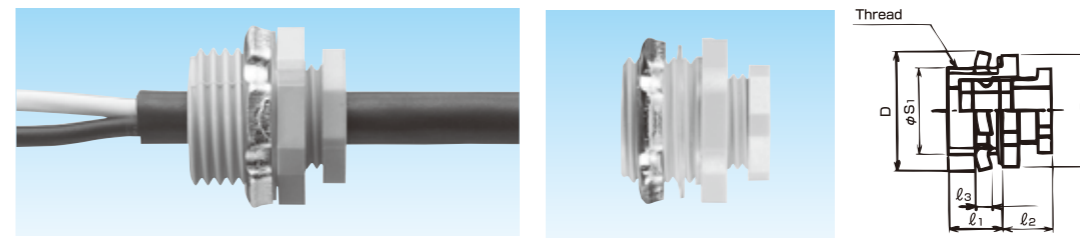
[METRIC THREAD - INTERNAL THREAD / GRAY]

Delivery	Item number	Cable outside diameter to be inserted		Packing number	Thread JIS B0207		Weight (g/pc)	Qty / Package
		Max.	Min.		φ S ₂	Nominal size		
○	08 20	8	4	8	18.3	M20×1.5	16	20
○	12 20	12	8	12	18.3	M20×1.5	18	20
□	16 25	16	12	16	23.3	M25×1.5	24	20

ES SERIES COMPACT - STYLE CABLE GLAND FOR KNOCKOUT

MAIN MATERIAL	FEATURE	FEATURE	ENVIRONMENT	FLAMMABILITY	TEMPERATURE RANGE
PA6	IP67	Oil resistance	RoHS	UL94V0	Lowest -20°C ~Highest 90°C

PARALLEL PIPE THREAD - EXTERNAL THREAD



- Compact - style straight cable gland
- Designed for knockout of wiring boxes.

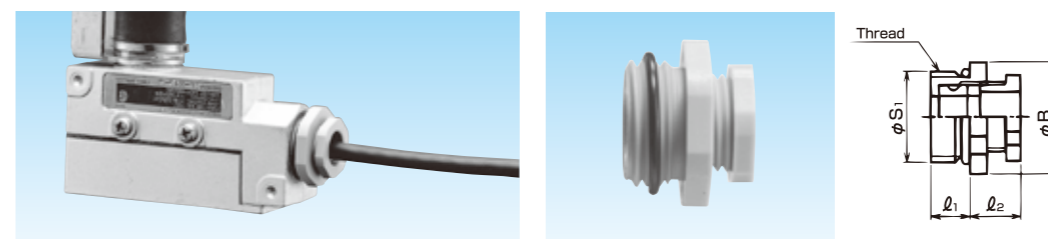
[LIGHT GRAY (STANDARD COLOR) / BLACK]

Delivery	Item number	Cable outside diameter to be inserted		φ B	D	l ₁	l ₂	l ₃	Thread JIS B 0202		Weight (g/pc)	Qty / Package
		Max.	Min.						φ S ₁	Nominal size		
○	ESBG 06 16	6	3	26.6	29	13	12	3.8	20.9	G1/2	14	50
○	ESBG 09 16	9	6	26.6	29	13	12	3.8	20.9	G1/2	13	50
○	ESBG 11 16	11	9	26.6	29	13	12	3.8	20.9	G1/2	13	50

ES SERIES COMPACT - STYLE CABLE GLAND FOR ELECTRIC DEVICES

MAIN MATERIAL	FEATURE	FEATURE	ENVIRONMENT	FLAMMABILITY	TEMPERATURE RANGE
PA6	IP67	Oil resistance	RoHS	UL94V0	Lowest -20°C ~Highest 90°C

PARALLEL PIPE THREAD - EXTERNAL THREAD



- Compact - style straight cable gland
- Designed for electric devices such as Limit switch.

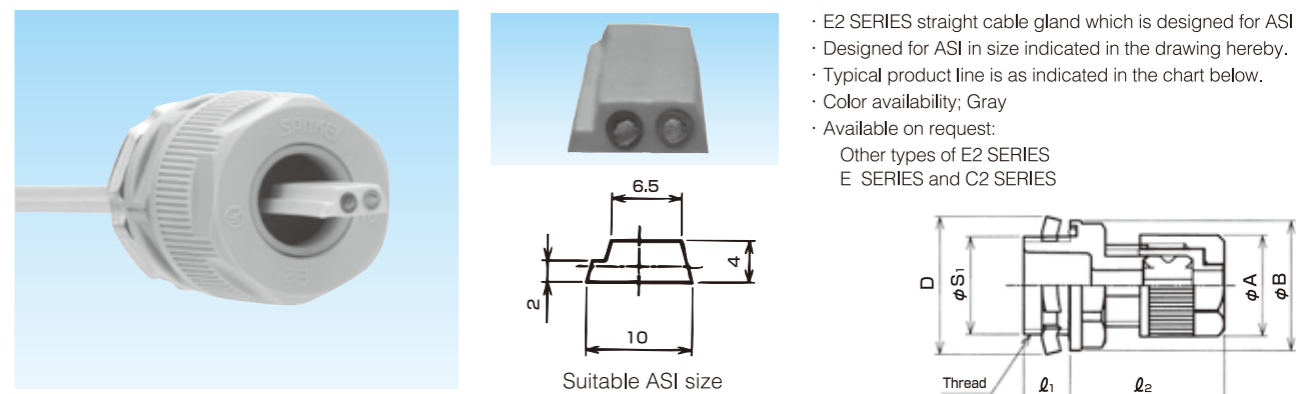
[LIGHT GRAY (STANDARD COLOR) / BLACK]

Delivery	Item number	Cable outside diameter to be inserted		φ B	l ₁	l ₂	Thread JIS B 0202		Weight (g/pc)	Qty / Package
		Max.	Min.				φ S ₁	Nominal size		
○	ESOG 06 16	6	3	26.6	9	12	20.9	G1/2	6	50
○	ESOG 09 16	9	6	26.6	9	12	20.9	G1/2	6	50
○	ESOG 11 16	11	9	26.6	9	12	20.9	G1/2	6	50

CABLE GLAND FOR ASI

MAIN MATERIAL	FEATURE	FEATURE	FEATURE	ENVIRONMENT	ENVIRONMENT	FLAMMABILITY	TEMPERATURE RANGE
PA66	IP67	Oil resistance	Hold up to vibration	HALOGEN FREE	RoHS	UL94V2	Lowest -20°C ~Highest 90°C

FOR KNOCKOUT

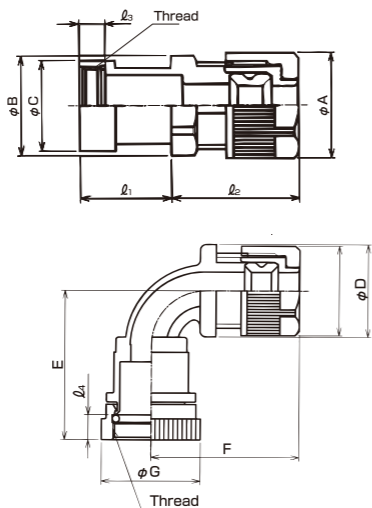


- E2 SERIES straight cable gland which is designed for ASI
- Designed for ASI in size indicated in the drawing hereby.
- Typical product line is as indicated in the chart below.
- Color availability; Gray
- Available on request:
Other types of E2 SERIES
E SERIES and C2 SERIES

Delivery	Item number	The size of ASI	Packing number	φ A	φ B D	l ₁	l ₂	Knockout diameter	Thread JIS B0207		Weight (g/pc)	Qty / Package
									φ S ₁	Nominal size		
○	E2BG-AS	As per the drawing.	12	30.0	29.0	10.0	34	21.0	20.9	G1/2	23	10
○	E2BM-AS		12	30.0	29.0	12.0	34	20.0	19.9	M20×1.5	23	10
○	E2BPg-AS		12	30.0	29.0	10.0	34	19.0	18.6	Pg11	23	10

E2 SERIES COUPLING TYPE CABLE GLAND FOR MS CONNECTOR

FOR MS CONNECTOR (No backshell type)



- Coupling type of Cable gland
- designed for MS connector (No backshell type).
- Water - resistant
- Color availability; Light Gray
- MOQ; Please check with our Sales dept
- Must be fully tightened on MS connector with a tool (Recommended tool; SUPERTOOL MFT68A). General tightening torque is as indicated in the chart.

Shell size	Tightening torque(N · m)	
	E2KD	E29KD
10~14	0.8~1.0	0.8~1.0
16~24	2.0~4.0	4.0~6.0
28~36	5.0~7.0	7.0~10.0

[LIGHT GRAY]

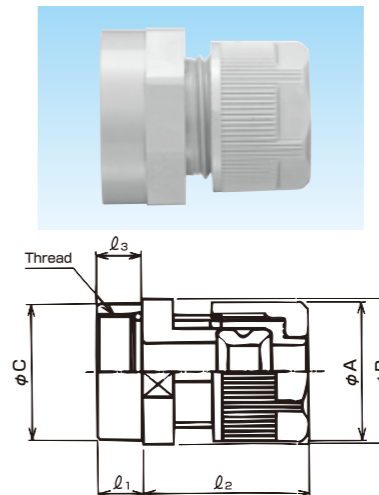
Delivery		Item number	Cable outside diameter to be inserted		Packing number	phi A phi B	phi C	phi A phi D	phi G	E	F	l1	l2	l3	l4	Connectable MS connector		Weight (g/pc)	
E2KD	E29KD		Max.	Min.												Shell size	Thread ASME B1.1	E2KD	E29KD
[5]	[9]																		
[5]	[9]	08 10				18.0		21.0	44			24.0		5.0	5.0	10SL	9/16- 24UNEF-2B	15	22
[5]	[9]	08 12				21.3		24.3				26.5		7.0		12S	11/16-24UNEF-2B	16	24
[5]	[9]	08 14				23.8		26.8	46			26.5		7.0		14S	3/4- 20UNEF-2B	16	25
[5]	[9]	08 16	8	4	8	24.6	24.6	29.0		47		26.5	36	7.5	7.5	16/16S	7/8- 20UNEF-2B	16	27
[5]	[9]	08 18				26.0		32.7	48			28.5		7.5		18	1- 20UNEF-2B	17	29
[5]	[9]	08 20				29.7		36.5	49			29.5		7.5		20	1-1/8- 18UNEF-2B	21	33
[5]	[9]	08 22				33.5						30.5		7.5		22	1-1/4- 18UNEF-2B	23	
[5]	[9]	12 10				37.0						34.0		7.5					
[5]	[9]	12 12				18.0		21.0	46			24.0		5.0	5.0	10SL	9/16- 24UNEF-2B	18	29
[5]	[9]	12 14				21.3		24.3				26.5		7.0		12S	11/16-24UNEF-2B	19	30
[5]	[9]	12 14				23.8		26.8	48			26.5		7.0		14S	3/4- 20UNEF-2B	20	31
[5]	[9]	12 16				26.0		29.0				26.5		7.5		16/16S	7/8- 20UNEF-2B	25	33
[5]	[9]	12 18	12	8	12	30.0	30.0	32.7	50	49		28.5	35	7.5	7.5	18	1- 20UNEF-2B	21	34
[5]	[9]	12 20				33.5		36.5	51			29.5		7.5		20	1-1/8- 18UNEF-2B	24	38
[5]	[9]	12 22				37.0		40.0	52			30.5		7.5		22	1-1/4- 18UNEF-2B	26	41
[5]	[9]	12 24				40.6		43.6	56			34.0		10.0	10.0	24	1-3/8- 18UNEF-2B	29	45
[5]	[9]	12 28				46.9		49.9				34.0		10.0	10.0	28	1-5/8- 18UNEF-2B	33	
[5]	[9]	16 16				26.0						26.5		7.5		16/16S	7/8- 20UNEF-2B	27	
[5]	[9]	16 18				29.7		32.7	54			28.5		7.5		18	1- 20UNEF-2B	28	54
[5]	[9]	16 20				33.5		36.5	55			29.5		7.5		20	1-1/8- 18UNEF-2B	30	57
[5]	[9]	16 22	16	12	16	36.0	40.8	40.0	56	56		30.5	37	7.5	7.5	22	1-1/4- 18UNEF-2B	31	59
[5]	[9]	E2KD 16 24				40.6		43.6				34.0		10.0		24	1-3/8- 18UNEF-2B	35	65
[5]	[9]	E29KD 16 28				46.9		49.9	60			34.0		10.0	10.0	28	1-5/8- 18UNEF-2B	39	70
[5]	[9]	16 32				53.3		56.3				34.0		10.0		32	1-7/8- 16UN-2B	42	76
[5]	[9]	20 18				29.7		32.7	54			28.5		7.5	7.5	18	1- 20UNEF-2B	37	48
[5]	[9]	20 20				33.5		36.5	55			29.5		7.5		20	1-1/8- 18UNEF-2B	40	51
[5]	[9]	20 22				37.0		40.0	56			30.5		7.5		22	1-1/4- 18UNEF-2B	41	53
[5]	[9]	20 24				40.6		43.6		58		34.0		10.0		24	1-3/8- 18UNEF-2B	44	60
[5]	[9]	20 28				46.9		49.9	60			34.0		10.0	10.0	28	1-5/8- 18UNEF-2B	45	65
[5]	[9]	20 32				53.3		56.3				34.0		10.0		32	1-7/8- 16UN-2B	40	71
[5]	[9]	24 22				37.0		40.0	60			30.5		7.5	7.5	22	1-1/4- 18UNEF-2B	50	80
[5]	[9]	24 24				40.6		43.6				34.0		10.0		24	1-3/8- 18UNEF-2B	52	83
[5]	[9]	24 28	24	20	24	48.0	48.3	49.9	64	62		34.0	40	10.0	10.0	28	1-5/8- 18UNEF-2B	54	87
[5]	[9]	24 32				53.3		56.3				34.0		10.0		32	1-7/8- 16UN-2B	56	94
[5]	[9]	24 36				59.5		62.5	69			39.0		11.0	12.0	36	2-1/8- 16UN-2B	58	105
[5]	[9]	28 24				40.6		43.6				34.0		10.0		24	1-3/8- 18UNEF-2B	53	95
[5]	[9]	28 28				46.9		49.9	69			34.0		10.0	10.0	28	1-5/8- 18UNEF-2B	55	98
[5]	[9]	28 32				53.3		56.3				34.0		10.0		32	1-7/8- 16UN-2B	65	108
[5]	[9]	28 36				59.5		62.3	74			39.0		11.0	12.0	36	2-1/8- 16UN-2B	74	116
[5]	[9]	32 28				46.9		49.9				34.0		10.0		28	1-5/8- 18UNEF-2B	70	121
[5]	[9]	32 32	32	28	32	58.9	58.9	56.3		69		34.0	45	10.0	10.0	32	1-7/8- 16UN-2B	79	126
[5]	[9]	32 36				59.5		62.3	74			39.0		11.0	12.0	36	2-1/8- 16UN-2B	82	135
[5]	[9]	36 32				53.3						34.0		10.0	10.0	32	1-7/8- 16UN-2B	85	
[5]	[9]	36 36	36	32	36	64.1						39.0		11.0	12.0	36	2-1/8- 16UN-2B	92	



MOQ; Please check with our Sales dept.

E2 SERIES COUPLING TYPE CABLE GLAND FOR MS CONNECTOR

FOR MS CONNECTOR (Backshell assembled type)



- Coupling type of Cable gland
- designed for MS connector (Backshell assembled type).
- Water - resistant
- Color availability; Light Gray
- MOQ; Please check with our Sales dept
- Must be fully tightened on MS connector with a tool (Recommended tool; SUPERTOOL MFT68A). General tightening torque is as indicated in the chart.

Shell size	Tightening torque(N · m)	
	E2KM	E29KM
10,14	0.8~1.0	0.8~1.0
16~24	2.0~4.0	4.0~6.0
32,36	5.0~7.0	7.0~10.0

[LIGHT GRAY]

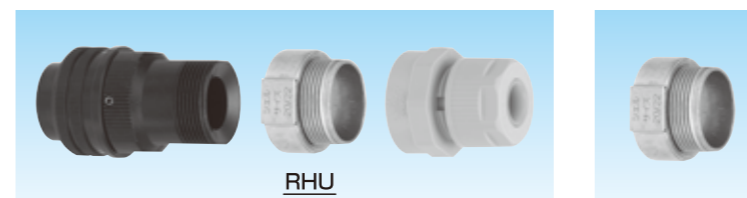
Delivery		Item number	Cable outside diameter to be inserted		Packing number	phi A phi B	phi C	l1	l2	l3	Connectable MS connector		Weight (g/pc)		
E2KD	E29KD		Max.	Min.							Shell size	Thread ASME B1.1		E2KD	E29KD
[5]	[9]														
[5]	[9]	08 10				24.6	19.5	9.0			10SL/12S	5/8- 24UNEF-2B	12		
[5]	[9]	08 14				25.4	23.8	9.0			14S	3/4- 20UNEF-2B	14		
[5]	[9]	08 16				27.5	26.0	9.0			16/16S	7/8- 20UNEF-2B	13		
[5]	[9]	08 18	8	4	8	31.7	29.7	9.0		36	18	1- 20UNEF-2B	14		
[5]	[9]	08 20				37.0	35.0	9.0			20/22	1-3/16-18UNEF-2B	17		
[5]	[9]	08 24				44.5	42.1	9.0			24/28	1-7/16-18UNEF-2B	21		
[5]	[9]	12 10				30.0	19.5	9.0			10SL/12S	5/8- 24UNEF-2B	16		
[5]	[9]	12 14				30.0	23.8	9.0			14S	3/4- 20UNEF-2B	17		
[5]	[9]	12 16				30.0	26.0	9.0		35	16/16S	7/8- 20UNEF-2B	17		
[5]	[9]	12 18	12	8	12	31.7	29.7	9.0			18	1- 20UNEF-2B	19		
[5]	[9]	12 20				37.0	35.0	9.0			20/22	1-3/16-18UNEF-2B	20		
[5]	[9]	12 24				44.5	42.1	9.0			24/28	1-7/16-18UNEF-2B	24		
[5]	[9]	16 14				36.0	23.8	9.0		37	14S	3/4- 20UNEF-2B	25		
[5]	[9]	16 16				36.0	26.0	9.0			16/16S	7/8- 20UNEF-2B	27		
[5]	[9]	16 18				36.0	29.7	9.0			18	1- 20UNEF-2B	23		
[5]	[9]	16 20	16	12	16	37.0	35.0	9.0			20/22	1-3/16-18UNEF-2B	24		
[5]	[9]	16 24				44.5	42.1	9.0			24/28	1-7/16-18UNEF-2B	28		
[5]	[9]	16 32				53.3	50.4	10.5			32	1-3/4- 18UNS-2B	34		
[5]	[9]	16 36				59.7	56.5	12.0			36	2- 18UNS-2B	40		
[5]	[9]	20 18				42.0	29.7	9.0			18	1- 20UNEF-2B	32		
[5]	[9]	20 20				42.0	35.0	9.0			20/22	1-3/16-18UNEF-2B	34		
[5]	[9]	20 24	20	16	20	44.5	42.1	9.0			24/28	1-7/16-18UNEF-2B	36		
[5]	[9]	20 32				53.3	50.4	10.5			32	1-3/4- 18UNS-2B	40		
[5]	[9]	20 36				59.7	56.5	12.0			36	2- 18UNS-2B	45		
[5]	[9]	24 20				48.0	35.0	9.0			20/22	1-3/16-18UNEF-2B	42		
[5]	[9]	24 24	24	20	24	48.0	42.1	9.0		40	24/28	1-7/16-18UNEF-2B	42		
[5]	[9]	24 32				53.3	50.4	10.5			32	1-3/4- 18UNS-2B	46		
[5]	[9]	24 36				59.7	56.5	12.0			36	2- 18UNS-2B	51		
[5]	[9]	28 24				53.5	42.1	9.0			24/28	1-7/16-18UNEF-2B	57		
[5]	[9]	28 32				53.5	50.4	10.5			32	1-3/4- 18UNS-2B	57		
[5]	[9]	28 36				59.7	56.5	12.0			36	2- 18UNS-2B	56		



MOQ; Please check with our Sales dept.

HUB

Type RHU



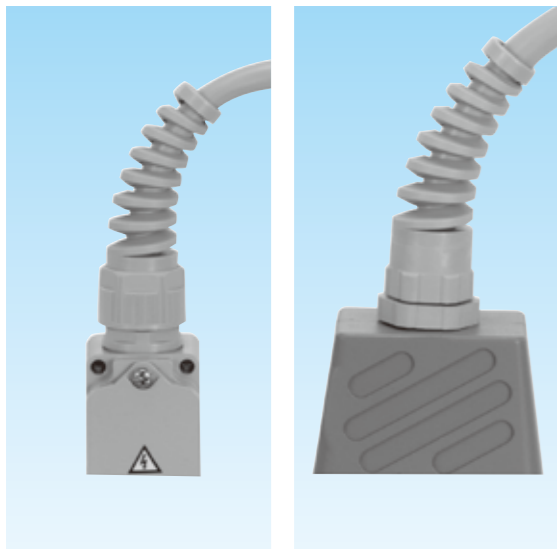
- Hub (Type; RHU)
- Designed to extend the Main body of E2KM
- MS connector wiring work can be done more efficiently
- Please look at a page for SANPARTS for more information

MAIN MATERIAL	SURFACE FINISH	FEATURE	TEMPERATURE RANGE
Brass	Electroplated zinc	IP67	Lowest -50°C ~Highest 150°C

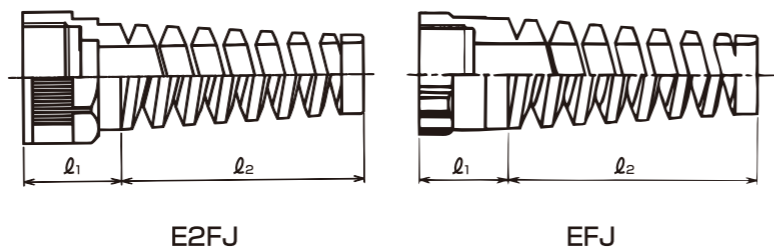
E2 SERIES / E SERIES STRAIN RELIEF BOX NUT

FEATURE	ENVIRONMENT	TEMPERATURE RANGE
Oil resistance	RoHS	Lowest -20°C ~Highest 100°C

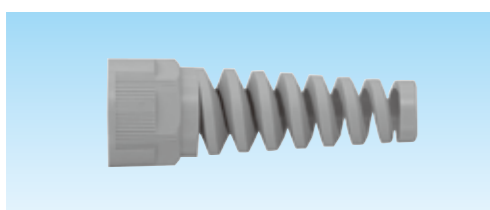
TYPE E2FJ / TYPE EFJ



- Non-metallic Strain relief box nut
- Designed to prevent a cable from drooping
- Match up with all types of E2 SERIES and E SERIES CABLE GLAND
- Replace Box nut of Cable gland with Non-metallic Strain relief box nut E2FJ / E2FJ※BK/ EFJ / EFJ※BK chosen.
- Packing number of E2FJ / E2FJ※BK/ EFJ / EFJ※BK and Cable gland must be identical to each other when chosen



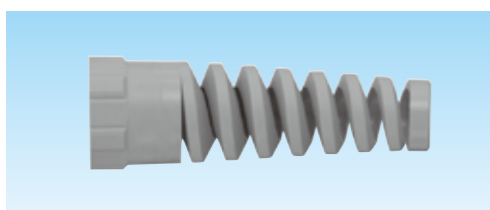
TYPE E2



Deliver	Item number		Cable outside diameter to be inserted		Packing number	l ₁	l ₂	Weight (g/pc)	Qty / Package
	Light gray	Black	Max.	Min.					
	○	●							
○	E2FJ 08	E2FJ 08 BK	8	4	8	23.5	54.0	8	10
○	E2FJ 12	E2FJ 12 BK	12	8	12	24.9	60.0	16	10
○	E2FJ 16	E2FJ 16 BK	16	12	16	26.5	66.0	22	10
○	E2FJ 20	E2FJ 20 BK	20	16	20	28.5	71.5	30	5

MAIN MATERIAL	FEATURE	ENVIRONMENT	FLAMMABILITY
PA66	Hold up to vibration	HALOGEN FREE	UL94V2

TYPE E

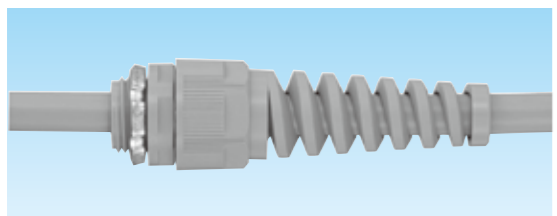


Deliver	Item number		Cable outside diameter to be inserted		Packing number	l ₁	l ₂	Weight (g/pc)	Qty / Package
	Light gray	Black	Max.	Min.					
	○	●							
○	EFJ 12	EFJ 12 BK	12	8	12	21.8	60.0	15	10
○	EFJ 16	EFJ 16 BK	16	12	16	24.0	66.0	21	10
○	EFJ 20	EFJ 20 BK	20	16	20	26.1	71.5	28	5

MAIN MATERIAL	FLAMMABILITY
PA6	UL94V0

E2 SERIES / E SERIES CABLE GLAND WITH STRAIN RELIEF BOX NUT

FEATURE	ENVIRONMENT	TEMPERATURE RANGE
IP67	RoHS	Lowest -20°C ~Highest 90°C



- E2 SERIES and E SERIES CABLE GLAND with Non-metallic Strain relief box nut E2FJ / E2FJ※BK/ EFJ / EFJ※BK
- Add J to Item number of a cable gland required
e.g. E2BG J 0816 = E2BG0816 + E2FJ
- Typical product line is as indicated as follows

TYPE E2

E2BGJ	E29OG
E29BGJ	E29OM
E2BMJ	E29OPg
E2BPgJ	E2KD
E2OGJ	E29KD
E2OMJ	E2KM
E2OPgJ	

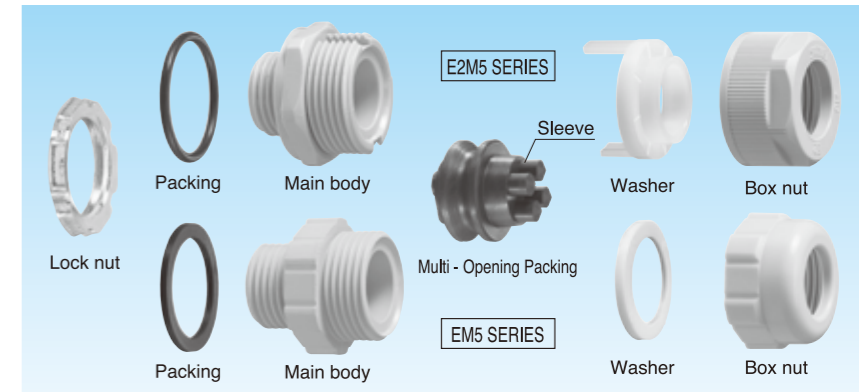
TYPE E

EBGJ
EOGJ
EBPgJ

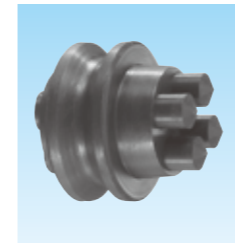
MULTI-OPENING PACKING EM5GP & E2M5/EM5 SERIES CABLE GLAND-MULTI OPENING SERIES

FEATURE	FEATURE	ENVIRONMENT	TEMPERATURE RANGE
IP67	Oil resistance	RoHS	Lowest -20°C ~Highest 90°C

MULTI - OPENING PACKING EM5GP



MATERIAL
NBR

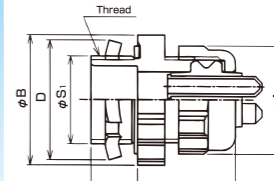
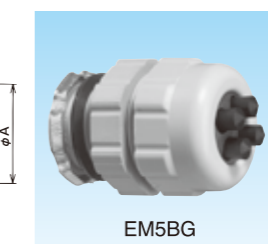
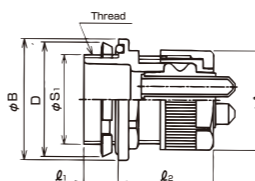


Deliver	Qty of cable	Item number	Cable outside diameter to be inserted		Packing number	Weight (g/pc)	Qty / Package
			With sleeve	Without sleeve			
○	2	EM5GP16-7X2P	5.0~3.0	7.0~5.0	16	5	20
○	3	EM5GP16-6X3P	4.0~3.0	6.0~4.0	7	5	20
○	3	EM5GP20-8X3P	6.0~4.0	8.0~6.0	20	7	20
○	4	EM5GP16-5X4P	3.0~2.0	5.0~3.0	16	5	20
○		EM5GP24-8X4P	6.0~4.0	8.0~6.0	24	11	20

- Multi - Opening Packing EM5GP
- Designed to adapt Cable gland (E2 SERIES, E SERIES and C2 SERIES) for multiple cables.
- Designed for all the types of E2 SERIES, E SERIES and C2 SERIES of Cable gland
- Packing number of Multi - Opening Packing and Cable gland must be identical to each other when chosen.
- Cut off the end of Sleeve should it be utilized.
- Unused opening(s) of Multi - Opening Packing EM5GP must be plugged with Sleeve. Note; Sleeve must NOT be cut in this case
- Available on request:
Cable gland (E2 SERIES, E SERIES and C2 SERIES) with Multi - Opening Packing EM5GP
- Note; Cable gland with Multi - Opening Packing EM5GP does not comply with UL



E2M5 / EM5 SERIES CABLE GLAND - MULTI OPENING SERIES



- Straight cable gland with Multi - Opening Packing EM5GP
- The size of knock out required; as indicated in the chart below

E2M5 SERIES (Able to prevent Box nut from being loosened)

MAIN MATERIAL	FEATURE	ENVIRONMENT	FLAMMABILITY
PA66	Hold up to vibration	HALOGEN FREE	UL94V2

Deliver	Qty of cable	Item number		Cable outside diameter to be inserted		Packing number	phi A	phi B D	l ₁	l ₂	Knockout diameter	Thread JIS B 0202		Weight (g/pc)	Qty / Package
		Light gray	Black	Light gray	Black							phi S1	Nominal size		
		○	●												
○	○	2	E2M5BG 7X2P-16	E2M5BG 7X2P-16BK	5.0~3.0	7.0~5.0	16	36.0	35.3	34	21.0	20.9	G1/2	35	20
○	○	2	E2M5BG 7X2P-22	E2M5BG 7X2P-22BK	5.0~3.0	7.0~5.0	16	36.0	36.0	35	26.5	26.4	G3/4	37	20
○	○	3	E2M5BG 6X3P-16	E2M5BG 6X3P-16BK	4.0~3.0	6.0~4.0	16	36.0	35.3	34	21.0	20.9	G1/2	35	20
○	○		E2M5BG 6X3P-22	E2M5BG 6X3P-22BK											
○	○	3	E2M5BG 8X3P-22	E2M5BG 8X3P-22BK	6.0~4.0	8.0~6.0	20	42.0	42.0	35	26.5	26.4	G3/4	45	20
○	○		E2M5BG 5X4P-16	E2M5BG 5X4P-16BK											
○	○	4	E2M5BG 5X4P-22	E2M5BG 5X4P-22BK	3.0~2.0	5.0~3.0	16	36.0	36.0	35	26.5	26.4	G3/4	37	20
○	○		E2M5BG 8X4P-22	E2M5BG 8X4P-22BK											

EM5 SERIES (Smaller Box nut than E2M5 SERIES)

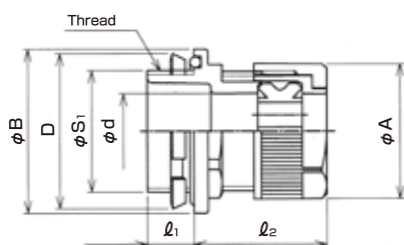
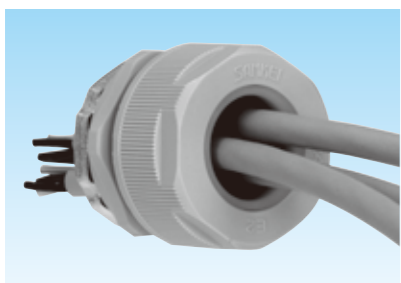
MAIN MATERIAL	FLAMMABILITY
PA6	UL94V0

Deliver	Qty of cable	Item number		Cable outside diameter to be inserted		Packing number	phi A	phi B D	l ₁	l ₂	Thread JIS B 0202	Weight (g/pc)	Qty / Package		
		Light gray	Black	Light gray	Black									phi S1	Nominal size
		○	●												
○	○	2	EM5BG 7X2P-16	EM5BG 7X2P-16BK	5.0~3.0	7.0~5.0	16	32.4	13.0	33	20.9	G1/2	32	20	
○	○	2	EM5BG 7X2P-22	EM5BG 7X2P-22BK	5.0~3.0	7.0~5.0	16	32.4	14.0	33	26.4	G3/4	35	20	
○	○	3	EM5BG 6X3P-16	EM5BG 6X3P-16BK	4.0~3.0	6.0~4.0	16	32.4	13.0	33	20.9	G1/2	32	20	
○	○		EM5BG 6X3P-22	EM5BG 6X3P-22BK											38.9
○	○	3	EM5BG 8X3P-22	EM5BG 8X3P-22BK	6.0~4.0	8.0~6.0	20	37.8	38.9	14.0	34	26.4	G3/4	41	20
○	○		EM5BG 5X4P-16	EM5BG 5X4P-16BK											
○	○	4	EM5BG 5X4P-22	EM5BG 5X4P-22BK	3.0~2.0	5.0~3.0	16	32.4	14.0	33	26.4	G3/4	35	20	
○	○		EM5BG 5X4P-22	EM5BG 5X4P-22BK											38.9

E2M SERIES CABLE GLAND FOR NOCKOUT - MULTI OPENING SERIES

MAIN MATERIAL	FEATURE	FEATURE	FEATURE	ENVIRONMENT	ENVIRONMENT	FLAMMABILITY	TEMPERATURE RANGE
PA66	IP67	Oil resistance	Hold up to vibration	HALOGEN FREE	RoHS	UL94V2	Lowest -20°C ~ Highest 90°C

PARALLEL PIPE THREAD - EXTERNAL THREAD



- Straight cable gland for multiple cables designed to extend the product range of E2M5 SERIES.
- Multi - Opening Packing EMGP is Possible to be assembled after a cable/cables is/are inserted into cable gland beforehand
- The typical product line is as indicated as follows
- Unused openings of Multi - Opening Packing EMGP must be blocked with Plug EPU (Separately available)
- Note; Cable gland with Multi - Opening Packing EMGP does not comply with UL
- The size of knockout must be as indicated in the chart below.
- MOQ; Please check with our Sales dept.

[LIGHT GRAY]

Delivery	Qty of cable	Item number	Cable outside diameter to be inserted		Packing number	phi A	phi B	phi D	phi d	l1	l2	knockout diameter	Thread JIS B 0202		Weight (g/pc)
			Max.	Min.									phi S1	Nominal size	
⊙	1	E2MBG16-6X1P-16	phi 6	phi 5	16	36	35.3	15.2	10	37	21.0	20.9	G1/2		33
		E2MBG16-8X1P-22	phi 8	phi 7	16	36	35.3	16.3	10	37	27.0	26.4	G3/4		32
⊙	2	E2MBG08-2X2P-16	phi 2	phi 1	08	24.6	29	8.3	10	36	21.0	20.9	G1/2		24
		E2MBG16-4.2X7.8-16	phi 4.2, phi 7.8	phi 3.2, phi 6.8	16	36	35.3	15.2	10	37	21.0	20.9	G1/2		31
⊙	3	E2MBG16-6X2P-22	phi 6	phi 5	16	36	35.3	16.3	10	37	27.0	26.4	G3/4		36
		E2MBG16-7X2P-16	phi 7	phi 6	16	36	35.3	15.2	10	37	21.0	20.9	G1/2		31
		E2MBG16-7X2P-22	phi 7	phi 6	16	36	35.3	16.3	10	37	27.0	26.4	G3/4		34
⊙	4	E2MBG16-5.3X3P-16	phi 5.3	phi 4.3	16	36	35.3	15.2	10	37	21.0	20.9	G1/2		31
		E2MBG16-6X3P-22	phi 6	phi 5	16	36	35.3	16.3	10	37	27.0	26.4	G3/4		36
		E2MBG24-7X3P-28	phi 7	phi 6	24	48	48	24.4	14	40	34.0	33.2	G1		50
		E2MBG24-8X3P-28	phi 8	phi 7	24	48	48	24.4	14	40	34.0	33.2	G1		59
⊙	5	E2MBG24-9X3P-28	phi 9	phi 8	24	48	48	24.4	14	40	34.0	33.2	G1		58
		E2MBG20-5X4P+6X2P-22	phi 5, phi 6	phi 4, phi 5	20	42	42	20.2	10	39	27.0	26.4	G3/4		40
		E2MBG16-5X4P-16	phi 5	phi 4	16	36	35.3	15.2	10	37	21.0	20.9	G1/2		28
		E2MBG20-6X4P-22	phi 6	phi 5	20	42	42	20.2	10	39	27.0	26.4	G3/4		40
		E2MBG24-8X4P-28	phi 8	phi 7	24	48	48	24.4	14	40	34.0	33.2	G1		56
⊙	7	E2MBG24-9X4P-28	phi 9	phi 8	24	48	48	24.4	14	40	34.0	33.2	G1		54
		E2MBG20-4X7P-22	phi 4	phi 3	20	42	42	20.2	10	39	27.0	26.4	G3/4		25

"Instruction of selecting Item number of E2M SERIES"

[1] . Select Multi - Opening zPacking EMGP required
 Note; Item number of Multi - Opening Packing EMGP varies according to Qty of cables inserted and cable outside diameter of each cable.

e.g.; Cables inserted;
 Outside diameter phi 5.8 cable x 2 pcs, and Outside diameter phi 8.6 cable x 1 pc

- ① Refer to the column 「Cable max outside diameter to be inserted」 in the chart of 「Qty of cable:3」
- ② Choose EMGP20-6X2P+9 (Cable max outside diameter to be inserted phi 6 x 2 pcs, phi 9 x 1 pc) as the Item number of Multi - Opening Packing EMGP.

[Qty of cable:3]

Packing number	Item number	Cable max outside diameter to be inserted ※ phi d	Weight (g/pc)
20	EMGP20-2X3P	phi 2X3pc	8
	EMGP20-6X2P+9	phi 6X2pc、phi 9X1pc	7
	EMGP20-6+8X2P	phi 6X1pc、phi 8X2pc	6
	EMGP20-7X3P	phi 7X3pc	7

[2] . Select Cable gland
 Note; Packing number of Multi - Opening Packing and Cable gland must be identical to each other when chosen.

e.g.; Multi - Opening Packing EMGP chosen;
 EMGP20-6X2P+9 (Packing number ; No. 20) / Cable gland in order; E2BG

- ① Refer to the column 「Packing number」 on the page of E2BG
- ② Find suitable Cable gland (Packing number must be No. 20)
- ③ Choose E2BG2022

[3] . Select Item number of E2M SERIES
 ① E2BG + Multi - Opening Packing EMGP = E2 M BG
 ② E2BG 20 22 + EMGP 20-6X2P+9 = E2 M BG 20-6X2P+9 - 22

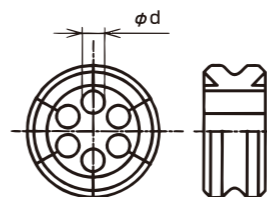
[4] . The other typical product line:
 (e.g. E2BM + Multi - Opening Packing EMGP = E2 M BM)
 (e.g. EBGM + Multi - Opening Packing EMGP = E M BG)
 (e.g. C2BG + Multi - Opening Packing EMGP = C2 M BG)

Delivery	Light gray	Black	Item number		Cable outside diameter to be inserted		Packing number	phi A	phi B	phi D
			Light gray	Black	Max.	Min.				
⊙	⊙		E2BG1516	E2BG1516BK	※15	12	16	33.4	35.3	
⊙	⊙		E2BG1622	E2BG1622BK	16	12	16	33.4	35.3	
⊙	⊙		E2BG2022	E2BG2022BK	20	16	20	39.1	42.0	

MULTI - OPENING PACKING EMGP

MATERIAL	FEATURE	ENVIRONMENT	TEMPERATURE RANGE	QTY
NBR	IP67	RoHS	Lowest -20°C ~ Highest 90°C	Min. Qty per Package

MULTI - OPENING PACKING EMGP



- Multi - Opening Packing EMGP is designed to adapt E2 SERIES, E SERIES and C2 SERIES for multiple cables.
- Refer to "Instruction of selecting Item number of E2M SERIES" / "Instruction of selecting Item number of C2M SERIES"
- Unused openings must be blocked with Plug EPU (Separately available)
- Delivery; Please check with our Sales dept.
- Available on request: Multi - Opening Packing EMGP as a spare

[Qty of cable:1]

Packing number	Item number	Cable max outside diameter to be inserted ※ phi d	Weight (g/pc)
08	EMGP08-3X1P	phi 3X1pc	2
	EMGP08-4X1P	phi 4X1pc	2
	EMGP12-5X1P	phi 5X1pc	3
12	EMGP12-6X1P	phi 6X1pc	3
	EMGP12-7X1P	phi 7X1pc	3
	EMGP12-8X1P	phi 8X1pc	3
16	EMGP16-4X1P	phi 4X1pc	5
	EMGP16-5X1P	phi 5X1pc	5
	EMGP16-6X1P	phi 6X1pc	5
	EMGP16-6.7X1P	phi 6.7X1pc	5
	EMGP16-7.7X1P	phi 7.7X1pc	4
	EMGP16-8X1P	phi 8X1pc	4
20	EMGP16-10.5X1P	phi 10.5X1pc	4
	EMGP16-12X1P	phi 12X1pc	4
	EMGP20-5.3X1P	phi 5.3X1pc	8
	EMGP20-6X1P	phi 6X1pc	8
	EMGP20-7X1P	phi 7X1pc	8
24	EMGP20-9X1P	phi 9X1pc	8
	EMGP20-10X1P	phi 10X1pc	7
	EMGP24-4X1P	phi 4X1pc	13
	EMGP24-5X1P	phi 5X1pc	13
28	EMGP24-6X1P	phi 6X1pc	13
	EMGP24-6.5X1P	phi 6.5X1pc	13
	EMGP24-8X1P	phi 8X1pc	12
	EMGP24-9X1P	phi 9X1pc	12
	EMGP24-13.5X1P	phi 13.5X1pc	11
	EMGP24-15X1P	phi 15X1pc	10
	EMGP24-19X1P	phi 19X1pc	8
	EMGP28-5X1P	phi 5X1pc	17
32	EMGP28-6X1P	phi 6X1pc	17
	EMGP28-9X1P	phi 9X1pc	16
	EMGP28-18X1P	phi 18X1pc	13
	EMGP28-21X1P	phi 21X1pc	11
	EMGP32-6X1P	phi 6X1pc	24
36	EMGP32-13X1P	phi 13X1pc	20
	EMGP32-17X1P	phi 17X1pc	18
	EMGP32-21X1P	phi 21X1pc	17
	EMGP32-22X1P	phi 22X1pc	15
40	EMGP32-25X1P	phi 25X1pc	13
	EMGP40-9X1P	phi 9X1pc	42

[Qty of cable:2]

Packing number	Item number	Cable max outside diameter to be inserted ※ phi d	Weight (g/pc)
08	EMGP08-2X2P	phi 2x2pc	2
	EMGP12-3X2P	phi 3x2pc	3
	EMGP12-3+7	phi 3x1pc、phi 7x1pc	2
12	EMGP12-3.3X2P	phi 3.3x2pc	3
	EMGP12-4X2P	phi 4x2pc	3
	EMGP12-4.5+6	phi 4.5x1pc、phi 6x1pc	2
16	EMGP16-3.3X2P	phi 3.3x2pc	5
	EMGP16-4+5.2	phi 4x1pc、phi 5.2x1pc	4
	EMGP16-4+6	phi 4x1pc、phi 6x1pc	4
	EMGP16-4.2+7.8	phi 4.2x1pc、phi 7.8x1pc	4
	EMGP16-5+7	phi 5x1pc、phi 7x1pc	4
	EMGP16-5.3X2P	phi 5.3x2pc	4
20	EMGP16-6X2P	phi 6x2pc	4
	EMGP16-6+7	phi 6x1pc、phi 7x1pc	4
	EMGP16-6+8	phi 6x1pc、phi 8x1pc	4
	EMGP16-7X2P	phi 7x2pc	4
	EMGP20-4X2P	phi 4x2pc	8
24	EMGP20-5+6	phi 5x1pc、phi 6x1pc	8
	EMGP20-5.3X2P	phi 5.3x2pc	8
	EMGP20-6+8	phi 6x1pc、phi 8x1pc	8
	EMGP20-6.5+9.5	phi 6.5x1pc、phi 9.5x1pc	7
	EMGP20-7X2P	phi 7x2pc	7
	EMGP20-7+8	phi 7x1pc、phi 8x1pc	7
	EMGP20-7+9	phi 7x1pc、phi 9x1pc	7
	EMGP20-7+10	phi 7x1pc、phi 10x1pc	7
28	EMGP20-8X2P	phi 8x2pc	7
	EMGP20-8+9	phi 8x1pc、phi 9x1pc	7
	EMGP20-8+10	phi 8x1pc、phi 10x1pc	7
	EMGP20-9X2P	phi 9x2pc	7
	EMGP24-5+6	phi 5x1pc、phi 6x1pc	13
	EMGP24-6+9	phi 6x1pc、phi 9x1pc	12
32	EMGP24-6+10	phi 6x1pc、phi 10x1pc	12
	EMGP24-7+9	phi 7x1pc、phi 9x1pc	12
	EMGP24-7+10.5	phi 7x1pc、phi 10.5x1pc	11
	EMGP24-7+12	phi 7x1pc、phi 12x1pc	11
	EMGP24-7+14	phi 7x1pc、phi 14x1pc	10
	EMGP24-7.5+10.5	phi 7.5x1pc、phi 10.5x1pc	11
	EMGP24-7.5+11.5	phi 7.5x1pc、phi 11.5x1pc	11
	EMGP24-8+10	phi 8x1pc、phi 10x1pc	11
	EMGP24-8+13	phi 8x1pc、phi 13x1pc	10
	EMGP24-9+10	phi 9x1pc、phi 10x1pc	11
40	EMGP24-9+11	phi 9x1pc、phi 11x1pc	10
	EMGP24-9+12	phi 9x1pc、phi 12x1pc	10
	EMGP24-9+12.5	phi 9x1pc、phi 12.5x1pc	10
	EMGP24-10X2P	phi 10x2pc	10
	EMGP24-10+12	phi 10x1pc、phi 12x1pc	10
	EMGP28-7+14.5	phi 7x1pc、phi 14.5x1pc	14
	EMGP28-9+15	phi 9x2pc、phi 15x1pc	13
	EMGP28-10+14.5	phi 10x1pc、phi 14.5x1pc	13
	EMGP28-11X2P	phi 11x2pc	14
	EMGP28-12X2P	phi 12x2pc	13
	EMGP32-7.4+23.4	phi 7.4x1pc、phi 23.4x1pc	17
	EMGP32-8X2P	phi 8x2pc	21
	EMGP32-8+20	phi 8x1pc、phi 20x1pc	16
36	EMGP32-9X2P	phi 9x2pc	21
	EMGP32-10.5+13.5	phi 10.5x1pc、phi 13.5x1pc	14
	EMGP32-12+13	phi 12x1pc、phi 13x1pc	18
	EMGP32-12+14	phi 12x1pc、phi 14x1pc	18
40	EMGP36-9+16	phi 9x1pc、phi 16x1pc	26
	EMGP40-9+11	phi 9x1pc、phi 11x1pc	39
	EMGP40-11X2P	phi 11x2pc	40

• Cable outside diameter range to be inserted = phi d ~ phi d - 1 mm

MULTI - OPENING PACKING EMGP

MATERIAL	FEATURE	ENVIRONMENT	TEMPERATURE RANGE	QTY
NBR	IP67	RoHS	Lowest -20℃ ~Highest 90℃	Min. Qty per Package

MULTI - OPENING PACKING EMGP

[Qty of cable:3]

Packing number	Item number	Cable max outside diameter to be inserted ※ ϕ d	Weight (g/pc)
08	EMGP08-2X3P	ϕ 2x3pc	2
	EMGP12-3.3X3P	ϕ 3.3x3pc	3
12	EMGP12-4X3P	ϕ 4x3pc	3
	EMGP12-4+4.5+5	ϕ 4x1pc, ϕ 4.5x1pc, ϕ 5x1pc	3
	EMGP16-2+4+5	ϕ 2x1pc, ϕ 4x1pc, ϕ 5x1pc	4
	EMGP16-3X2P+5	ϕ 3x2pc, ϕ 5x1pc	5
	EMGP16-3X2P+6	ϕ 3x2pc, ϕ 6x1pc	4
16	EMGP16-3.3X3P	ϕ 3.3x3pc	4
	EMGP16-3.5X2P+6	ϕ 3.5x2pc, ϕ 6x1pc	4
	EMGP16-4X3P	ϕ 4x3pc	4
	EMGP16-5.3X3P	ϕ 5.3x3pc	4
	EMGP16-6X3P	ϕ 6x3pc	4
	EMGP20-2X3P	ϕ 2x3pc	8
	EMGP20-3X2P+6	ϕ 3x2pc, ϕ 6x1pc	7
	EMGP20-3X2P+7	ϕ 3x2pc, ϕ 7x1pc	7
	EMGP20-5X2P+6	ϕ 5x2pc, ϕ 6x1pc	7
	EMGP20-6X2P+9	ϕ 6x2pc, ϕ 9x1pc	7
	EMGP20-6+8X2P	ϕ 6x1pc, ϕ 8x2pc	6
	EMGP20-7X2P+8	ϕ 7x2pc, ϕ 8x1pc	6
	EMGP20-7X3P	ϕ 7x3pc	7
	EMGP20-7.5X3P	ϕ 7.5x3pc	6
	EMGP24-2X3P	ϕ 2x3pc	13
	EMGP24-4X3P	ϕ 4x3pc	13
	EMGP24-4.5X2P+7	ϕ 4.5x2pc, ϕ 7x1pc	12
	EMGP24-5X2P+6	ϕ 5x2pc, ϕ 6x1pc	12
	EMGP24-6X2P+11	ϕ 6x2pc, ϕ 11x1pc	11
	EMGP24-6X2P+12	ϕ 6x2pc, ϕ 12x1pc	10
	EMGP24-6X3P	ϕ 6x3pc	12
	EMGP24-6+8.5+10.5	ϕ 6x1pc, ϕ 8.5x1pc, ϕ 10.5x1pc	10
	EMGP24-7X2P+9	ϕ 7x2pc, ϕ 9x1pc	11
	EMGP24-7X2P+10	ϕ 7x2pc, ϕ 10x1pc	11
	EMGP24-7X3P	ϕ 7x3pc	12
	EMGP24-7+9X2P	ϕ 7x1pc, ϕ 9x2pc	11
	EMGP24-7+10X2P	ϕ 7x1pc, ϕ 10x2pc	10
	EMGP24-7.5X2P+10	ϕ 7.5x2pc, ϕ 10x1pc	10
	EMGP24-8X3P	ϕ 8x3pc	11
	EMGP24-9X3P	ϕ 9x3pc	10
	EMGP24-10X3P	ϕ 10x3pc	10
	EMGP28-6.5+8.5+14.5	ϕ 6.5x1pc, ϕ 8.5x1pc, ϕ 14.5x1pc	13
	EMGP28-7X2P+14	ϕ 7x2pc, ϕ 14x1pc	14
	EMGP28-7+10+12	ϕ 7x1pc, ϕ 10x1pc, ϕ 12x1pc	13
	EMGP28-8X2P+12	ϕ 8x2pc, ϕ 12x1pc	13
	EMGP28-8X2P+14	ϕ 8x2pc, ϕ 14x1pc	13
28	EMGP28-8+9+12	ϕ 8x1pc, ϕ 9x1pc, ϕ 12x1pc	13
	EMGP28-8+10X2P	ϕ 8x1pc, ϕ 10x2pc	13
	EMGP28-9X3P	ϕ 9x3pc	14
	EMGP28-10X3P	ϕ 10x3pc	13
	EMGP28-11X3P	ϕ 11x3pc	12
	EMGP32-5+13X2P	ϕ 5x1pc, ϕ 13x2pc	18
	EMGP32-8X2P+16	ϕ 8x2pc, ϕ 16x1pc	18
	EMGP32-8X2P+19	ϕ 8x2pc, ϕ 19x1pc	18
	EMGP32-8+13X2P	ϕ 8x1pc, ϕ 13x2pc	17
	EMGP32-9X3P	ϕ 9x3pc	19
32	EMGP32-9+12X2P	ϕ 9x1pc, ϕ 12x2pc	17
	EMGP32-10X2P+16	ϕ 10x2pc, ϕ 16x1pc	17
	EMGP32-10+12X2P	ϕ 10x1pc, ϕ 12x2pc	17
	EMGP32-12X3P	ϕ 12x3pc	16
	EMGP32-12+13X2P	ϕ 12x1pc, ϕ 13x2pc	16
	EMGP32-13X3P	ϕ 13x3pc	15
	EMGP36-4+7+9	ϕ 4x1pc, ϕ 7x1pc, ϕ 9x1pc	28
	EMGP36-8+10+21.5	ϕ 8x1pc, ϕ 10x1pc, ϕ 21.5x1pc	21
	EMGP36-9X2P+11	ϕ 9x2pc, ϕ 11x1pc	27
	EMGP36-9X2P+13	ϕ 9x2pc, ϕ 13x1pc	24
	EMGP36-9X2P+16	ϕ 9x2pc, ϕ 16x1pc	24
36	EMGP36-10X3P	ϕ 10x3pc	26
	EMGP36-11X3P	ϕ 11x3pc	25
	EMGP36-12+14X2P	ϕ 12x1pc, ϕ 14x2pc	22
	EMGP36-14X3P	ϕ 14x3pc	21
	EMGP36-15X3P	ϕ 15x3pc	19
	EMGP36-16X3P	ϕ 16x3pc	18
	EMGP40-8X2P+12	ϕ 8x2pc, ϕ 12x1pc	40
40	EMGP40-9X2P+20	ϕ 9x2pc, ϕ 20x1pc	32
	EMGP40-15X3P	ϕ 15x3pc	32
	EMGP40-16.5X3P	ϕ 16.5x3pc	29
44	EMGP44-18X3P	ϕ 18x3pc	37

[Qty of cable:4]

Packing number	Item number	Cable max outside diameter to be inserted ※ ϕ d	Weight (g/pc)
08	EMGP08-2X4P	ϕ 2x4pc	2
	EMGP12-2X2P+2.4X2P	ϕ 2x2pc, ϕ 2.4x2pc	3
12	EMGP12-2X2P+3.5X2P	ϕ 2x2pc, ϕ 3.5x2pc	3
	EMGP12-3.3X4P	ϕ 3.3x4pc	3
	EMGP16-2X2P+3.5X2P	ϕ 2x2pc, ϕ 3.5x2pc	5
	EMGP16-3X2P+4X2P	ϕ 3x2pc, ϕ 4x2pc	4
16	EMGP16-3.3X4P	ϕ 3.3x4pc	4
	EMGP16-4X4P	ϕ 4x4pc	4
	EMGP16-5X4P	ϕ 5x4pc	4
	EMGP20-4X2P+6X2P	ϕ 4x2pc, ϕ 6x2pc	7
	EMGP20-4X2P+7+9	ϕ 4x2pc, ϕ 7x1pc, ϕ 9x1pc	6
	EMGP20-4X4P	ϕ 4x4pc	8
20	EMGP20-4+6X2P+7	ϕ 4x1pc, ϕ 6x2pc, ϕ 7x1pc	6
	EMGP20-5X2P+6X2P	ϕ 5x2pc, ϕ 6x2pc	7
	EMGP20-5X6X3P	ϕ 5x1pc, ϕ 6x3pc	7
	EMGP20-6X4P	ϕ 6x4pc	7
	EMGP20-7X4P	ϕ 7x4pc	6
	EMGP24-4+6X2P+7	ϕ 4x1pc, ϕ 6x2pc, ϕ 7x1pc	11
	EMGP24-4+7X3P	ϕ 4x1pc, ϕ 7x3pc	11
	EMGP24-6X2P+8X2P	ϕ 6x2pc, ϕ 8x2pc	11
	EMGP24-6X3P+9	ϕ 6x3pc, ϕ 9x1pc	11
	EMGP24-6X4P	ϕ 6x4pc	11
24	EMGP24-6+8X3P	ϕ 6x1pc, ϕ 8x3pc	10
	EMGP24-7X2P+9X2P	ϕ 7x2pc, ϕ 9x2pc	10
	EMGP24-7X3P+8	ϕ 7x3pc, ϕ 8x1pc	10
	EMGP24-7X4P	ϕ 7x4pc	11
	EMGP24-8X4P	ϕ 8x4pc	10
	EMGP24-8+9X3P	ϕ 8x1pc, ϕ 9x3pc	10
	EMGP24-9X4P	ϕ 9x4pc	9
	EMGP28-6X2P+7X2P+8	ϕ 6x2pc, ϕ 7x2pc, ϕ 8x1pc	14
	EMGP28-6.5X2P+8.3+14.5	ϕ 6.5x2pc, ϕ 8.3x1pc, ϕ 14.5x1pc	12
	EMGP28-7X2P+10X2P	ϕ 7x2pc, ϕ 10x2pc	13
28	EMGP28-8+9X3P	ϕ 8x1pc, ϕ 9x3pc	14
	EMGP28-9X3P+11	ϕ 9x3pc, ϕ 11x1pc	12
	EMGP28-9X4P	ϕ 9x4pc	14
	EMGP32-6.5+10+11X2P	ϕ 6.5x1pc, ϕ 10x1pc, ϕ 11x2pc	17
	EMGP32-6.5+10+12X2P	ϕ 6.5x1pc, ϕ 10x1pc, ϕ 12x2pc	17
	EMGP32-7X3P+10	ϕ 7x3pc, ϕ 10x1pc	20
	EMGP32-7X3P+16	ϕ 7x3pc, ϕ 16x1pc	17
	EMGP32-7X4P	ϕ 7x4pc	20
	EMGP32-7+5+10X2P	ϕ 7x1pc, ϕ 7.5x1pc, ϕ 10x2pc	18
	EMGP32-8X2P+12+17	ϕ 8x2pc, ϕ 12x1pc, ϕ 17x1pc	14
	EMGP32-8+11X3P	ϕ 8x1pc, ϕ 11x3pc	16
	EMGP32-9+10+12X2P	ϕ 9x1pc, ϕ 10x1pc, ϕ 12x2pc	17
	EMGP32-9X4P	ϕ 9x4pc	17
	EMGP32-10X4P	ϕ 10x4pc	17
	EMGP32-11X4P	ϕ 11x4pc	16
	EMGP32-12X4P	ϕ 12x4pc	14
	EMGP36-7X2P+8+11	ϕ 7x2pc, ϕ 8x1pc, ϕ 11x1pc	26
	EMGP36-7X4P	ϕ 7x4pc	28
	EMGP36-9X2P+11+14	ϕ 9x2pc, ϕ 11x1pc, ϕ 14x1pc	23
36	EMGP36-11X4P	ϕ 11x4pc	24
	EMGP36-12X4P	ϕ 12x4pc	21
	EMGP36-13X4P	ϕ 13x4pc	20
	EMGP40-11+15X3P	ϕ 11x1pc, ϕ 15x3pc	29
	EMGP40-12X4P	ϕ 12x4pc	33
	EMGP40-13X4P	ϕ 13x4pc	31
	EMGP40-12X3P+15	ϕ 12x3pc, ϕ 15x1pc	32
44	EMGP44-6+16X3P	ϕ 6x1pc, ϕ 16x3pc	41

· Cable outside diameter range to be inserted = ϕ d ~ ϕ d - 1mm

MULTI - OPENING PACKING EMGP

MATERIAL	FEATURE	ENVIRONMENT	TEMPERATURE RANGE	QTY
NBR	IP67	RoHS	Lowest -20℃ ~Highest 90℃	Min. Qty per Package

MULTI - OPENING PACKING EMGP

[Qty of cable:5]

Packing number	Item number	Cable max outside diameter to be inserted ※ ϕ d	Weight (g/pc)
12	EMGP12-2X5P	ϕ 2x5pc	3
16	EMGP16-4X5P	ϕ 4x5pc	4
	EMGP20-4X3P+6.5X2P	ϕ 4x3pc, ϕ 6.5x2pc	7
20	EMGP20-4X4P+7	ϕ 4x4pc, ϕ 7x1pc	7
	EMGP20-5X5P	ϕ 5x5pc	7
	EMGP20-6X5P	ϕ 6x5pc	6
24	EMGP24-6+8X4P	ϕ 6x1pc, ϕ 8x4pc	10
	EMGP24-6.5X4P+8.5	ϕ 6.5x4pc, ϕ 8.5x1pc	10
	EMGP24-7X5P	ϕ 7x5pc	10
28	EMGP28-6+8X4P	ϕ 6x1pc, ϕ 8x4pc	12
	EMGP28-6X2P+7X2P+8	ϕ 6x2pc, ϕ 7x2pc, ϕ 8x1pc	14
	EMGP32-6X2P+7+10+12	ϕ 6x2pc, ϕ 7x1pc, ϕ 10x1pc, ϕ 12x1pc	18
	EMGP32-6+7X2P+9+10	ϕ 6x1pc, ϕ 7x2pc, ϕ 9x1pc, ϕ 10x1pc	18
	EMGP32-6+8X4P	ϕ 6x1pc, ϕ 8x4pc	18
	EMGP32-7X2P+8X2P+12	ϕ 7x2pc, ϕ 8x2pc, ϕ 12x1pc	18
32	EMGP32-8X4P+10	ϕ 8x4pc, ϕ 10x1pc	19
	EMGP32-8X4P+11	ϕ 8x4pc, ϕ 11x1pc	18
	EMGP32-9X5P	ϕ 9x5pc	17
	EMGP32-10X5P	ϕ 10x5pc	15
	EMGP36-8+9+10X2P+12	ϕ 8x1pc, ϕ 9x1pc, ϕ 10x2pc, ϕ 12x1pc	22
	EMGP36-8+10X4P	ϕ 8x1pc, ϕ 10x4pc	22
36	EMGP36-11X5P	ϕ 11x5pc	21
	EMGP36-12X5P	ϕ 12x5pc	19
	EMGP40-8X4P+11	ϕ 8x4pc, ϕ 11x1pc	37
40	EMGP40-11X2P+12X3P	ϕ 11x2pc, ϕ 12x3pc	32
	EMGP40-12X5P	ϕ 12x5pc	31

[Qty of cable:6]

Packing number	Item number	Cable max outside diameter to be inserted ※ ϕ d	Weight (g/pc)
12	EMGP12-2X6P	ϕ 2x6pc	2
	EMGP16-3X2P+4X4P	ϕ 3x2pc, ϕ 4x4pc	4
16	EMGP16-3X6P	ϕ 3x6pc	4
	EMGP16-4X6P	ϕ 4x6pc	4
	EMGP20-2X2P+4X3P+5	ϕ 2x2pc, ϕ 4x3pc, ϕ 5x1pc	8
	EMGP20-3X2P+4X4P	ϕ 3x2pc, ϕ 4x4pc	7
20	EMGP20-4X4P+6X2P	ϕ 4x4pc, ϕ 6x2pc	7
	EMGP20-5X6P	ϕ 5x6pc	7
	EMGP24-3X2P+6X4P	ϕ 3x2pc, ϕ 6x4pc	11
	EMGP24-4X2P+6X3P+8	ϕ 4x2pc, ϕ 6x3pc, ϕ 8x1pc	11
	EMGP24-4X6P	ϕ 4x6pc	12
24	EMGP24-5X6P	ϕ 5x6pc	11
	EMGP24-6X6P	ϕ 6x6pc	10
	EMGP24-6.5X6P	ϕ 6.5x6pc	10
	EMGP24-7X6P	ϕ 7x6pc	9
	EMGP32-6X2P+8X4P	ϕ 6x2pc, ϕ 8x4pc	19
	EMGP32-6X4P+10+13	ϕ 6x4pc, ϕ 10x1pc, ϕ 13x1pc	16
32	EMGP32-7X2P+8X2P+9X2P	ϕ 7x2pc, ϕ 8x2pc, ϕ 9x2pc	17
	EMGP32-8X6P	ϕ 8x6pc	19
	EMGP32-9X6P	ϕ 9x6pc	16
36	EMGP36-8X5P+13	ϕ 8x5pc, ϕ 13x1pc	24
	EMGP36-8X6P	ϕ 8x6pc	25
	EMGP36-8+9X4P+13	ϕ 8x1pc, ϕ 9x4pc, ϕ 13x1pc	32
	EMGP40-7+10X2P+12X3P	ϕ 7x1pc, ϕ 10x2pc, ϕ 12x3pc	32
	EMGP40-8+10X4P+12	ϕ 8x1pc, ϕ 10x4pc, ϕ 12x1pc	31
	EMGP40-9X3P+10X3P	ϕ 9x3pc, ϕ 10x3pc	34
	EMGP40-9.5X5P+13.5	ϕ 9.5x5pc, ϕ 13.5x1pc	32
	EMGP40-10.5X6P	ϕ 10.5x6pc	32
	EMGP40-12X6P	ϕ 12x6pc	28
52	EMGP52-9+10+14X4P	ϕ 9x1pc, ϕ 10x1pc, ϕ 14x4pc	73

[Qty of cable:7]

Packing number	Item number	Cable max outside diameter to be inserted ※ ϕ d	Weight (g/pc)
20	EMGP20-3X6P+4	ϕ 3x6pc, ϕ 4x1pc	7
	EMGP20-4X7P	ϕ 4x7pc	7
	EMGP24-4X2P+5X5P	ϕ 4x2pc, ϕ 5x5pc	11
24	EMGP24-5X7P	ϕ 5x7pc	11
	EMGP24-6X7P	ϕ 6x7pc	10
28	EMGP28-6+7X6P	ϕ 6x1pc, ϕ 7x6pc	13
	EMGP28-7X7P	ϕ 7x7pc	12
	EMGP32-6+7X6P	ϕ 6x1pc, ϕ 7x6pc	18
	EMGP32-6.1+8.3X6P	ϕ 6.1x1pc, ϕ 8.3x6pc	16
	EMGP32-7X6P+8	ϕ 7x6pc, ϕ 8x1pc	18
36	EMGP36-8.5X7P	ϕ 8.5x7pc	22
	EMGP40-7X2P+10.5X5P	ϕ 7x2pc, ϕ 10.5x5pc	32
40	EMGP40-7+8X3P+11X3P	ϕ 7x1pc, ϕ 8x3pc, ϕ 11x3pc	33
	EMGP40-10X7P	ϕ 10x7pc	31
44	EMGP44-11X7P	ϕ 11x7pc	31

[Qty of cable:8]

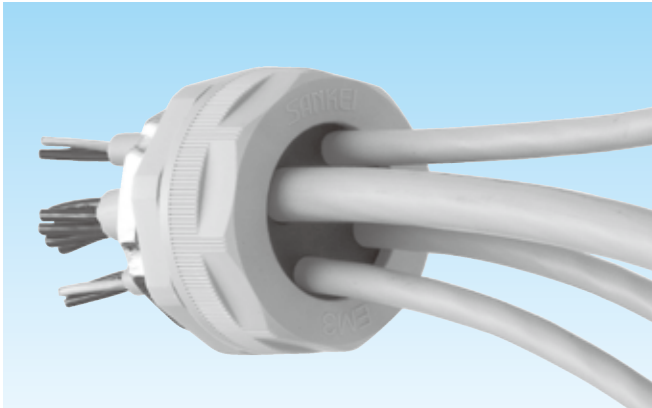
Packing number	Item number	Cable max outside diameter to be inserted ※ ϕ d	Weight (g/pc)
28	EMGP28-4.5+5.5X4P+7.5X3P	ϕ 4.5x1pc, ϕ 5.5x4pc, ϕ 7.5x3pc	13
	EMGP28-6X8P	ϕ 6x8pc	13
	EMGP28-6.5X8P	ϕ 6.5x8pc	14
36	EMGP36-7.5X6P+8.5+13	ϕ 7.5x6pc, ϕ 8.5x1pc, ϕ 13x1pc	21

</

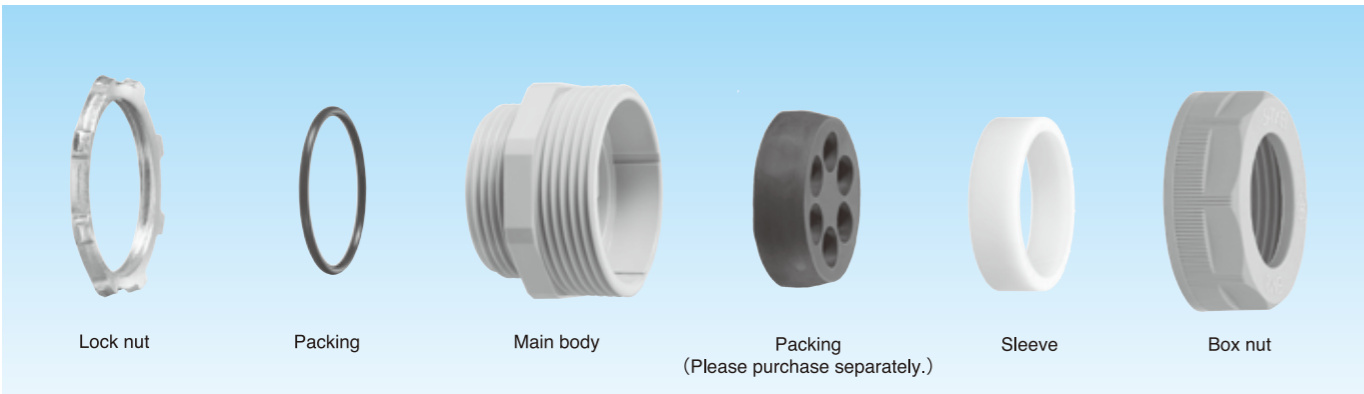
EM3 SERIES CABLE GLAND - MULTI OPENING SERIES

MAIN MATERIAL	FEATURE	FEATURE	FEATURE	ENVIRONMENT	ENVIRONMENT	FLAMMABILITY	TEMPERATURE RANGE
PA66	IP67	Oil resistance	Hold up to vibration	HALOGEN FREE	RoHS	UL94V2	Lowest -20°C ~Highest 90°C

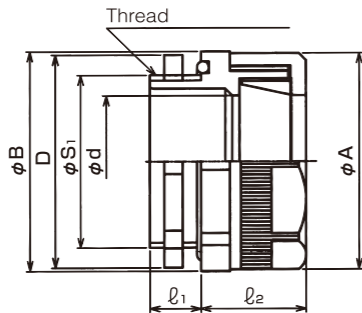
CONSTRUCTION



- Straight cable gland for multiple cables
- Designed for knock out of wiring boxes
- The size of knock out must be as indicated in the chart below
- Multi - Opening Packing EM3GP is Possible to be assembled after a cable/cables is/are inserted into cable gland beforehand
- Unused openings of Multi - Opening Packing EM3GP must be blocked with Plug EPU (Separately available)
- Note; Cable gland EM3 SERIES and Multi - Opening Packing EM3GP are separately available.
- Refer to the page for Multi - Opening Packing EM3GP to choose one required when placing a order for Cable gland EM3 SERIES
- Color availability; Light Gray



PARALLEL PIPE THREAD - EXTERNAL THREAD



[LIGHT GRAY]

Delivery	Item number	Selective Packing		ϕA	ϕB D	ϕd	l_1	l_2	Knockout diameter	Thread JIS B 0202		Weight (g/pc)	Qty / Package
		Packing number	Type							ϕS_1	Nominal size		
⊙	EM3BG 2022	20	EM3GP 20	42.2	37.8	20.5	14	27	27	26.4	G3/4	36	10
⊙	EM3BG 2428	24	EM3GP 24	46.9	44.0	24.5	14	27	34	33.2	G1	51	10
⊙	EM3BG 2628	28	EM3GP 28	51.3	48.3	26.2	14	28	34	33.2	G1	57	10
⊙	EM3BG 2836		EM3GP 28	51.3	56.8	28.5	14	28	42	41.9	G1-1/4	66	10
⊙	EM3BG 3236	32	EM3GP 32	55.5	56.8	32.5	14	28	42	41.9	G1-1/4	68	10
⊙	EM3BG 3436	36	EM3GP 36	59.9	55.5	33.9	14	29	42	41.9	G1-1/4	75	10
⊙	EM3BG 3642		EM3GP 36	59.9	61.0	36.5	16	30	48	47.8	G1-1/2	90	10
⊙	EM3BG 4042	40	EM3GP 40	64.6	61.0	40.5	16	30	48	47.8	G1-1/2	100	10

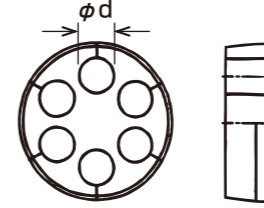


EPU; Please look at a page for Plug EPU

MULTI - OPENING PACKING EM3GP

MATERIAL	FEATURE	ENVIRONMENT	TEMPERATURE RANGE	QTY
NBR	IP67	RoHS	Lowest -20°C ~Highest 90°C	Min. Qty per Package

MULTI - OPENING PACKING EM3GP



- Unused openings must be blocked with Plug EPU (Separately available)
- Please contact us if any other combinations of Qty and Max outside diameter of cable to be inserted should be required

[Packing number ; No. 20]

Deliv-ery	Qty of cable	Item number	Cable outside diameter to be inserted ϕd	Connectable cable gland	Weight (g)
⊙	1	EM3GP20-7x1P	$\phi 7$	EM3BG2022	9
		EM3GP20-14x1P	$\phi 14$		6
		EM3GP20-3x2P	$\phi 3$		9
⊙	2	EM3GP20-5x2P	$\phi 5$		8
		EM3GP20-5+6	$\phi 5, \phi 6$		8
		EM3GP20-6x2P	$\phi 6$		9
		EM3GP20-5x2P+10	$\phi 5, \phi 10$		7
⊙	3	EM3GP20-5+7+9	$\phi 5, \phi 7, \phi 9$		7
		EM3GP20-6x2P+10	$\phi 6, \phi 10$		6
		EM3GP20-6+8+9	$\phi 6, \phi 8, \phi 9$		7
		EM3GP20-7x2P+9	$\phi 7, \phi 9$		7
		EM3GP20-7x2P+11	$\phi 7, \phi 11$		6
		EM3GP20-4x2P+6x2P	$\phi 4, \phi 6$		8
		EM3GP20-6x4P	$\phi 6$		7

[Packing number ; No. 28]

Deliv-ery	Qty of cable	Item number	Cable outside diameter to be inserted ϕd	Connectable cable gland	Weight (g)	
⊙	1	EM3GP28-10x1P	$\phi 10$	EM3BG2628	16	
		EM3GP28-15x1P	$\phi 15$		14	
		EM3GP28-20x1P	$\phi 20$		11	
⊙	2	EM3GP28-6+8	$\phi 6, \phi 8$		16	
		EM3GP28-6+12	$\phi 6, \phi 12$		12	
		EM3GP28-7+10	$\phi 7, \phi 10$		15	
		EM3GP28-8+15	$\phi 8, \phi 15$		13	
⊙	3	EM3GP28-9x2P	$\phi 9$		EM3BG2836	15
		EM3GP28-10+12	$\phi 10, \phi 12$			13
		EM3GP28-11x2P	$\phi 11$			13
		EM3GP28-2+6x2P	$\phi 2, \phi 6$			16
		EM3GP28-5x2P+6	$\phi 5, \phi 6$			16
		EM3GP28-11.5x3P	$\phi 11.5$			11
		EM3GP28-8+9x3P	$\phi 8, \phi 9$			13
		EM3GP28-9x4P	$\phi 9$	12		
⊙	4	EM3GP28-4x2P+8x2P	$\phi 3, \phi 4, \phi 8$	15		
		EM3GP28-5x4P+6+7	$\phi 5, \phi 6, \phi 7$	14		
⊙	5	EM3GP28-6x6P	$\phi 6$	11		
		EM3GP28-7x6P	$\phi 7$	12		
⊙	6	EM3GP28-4x7P	$\phi 4$	15		
		EM3GP28-3x2P+4x5P+6+7	$\phi 3, \phi 4, \phi 6, \phi 7$	14		
⊙	9	EM3GP28-4x12P	$\phi 4$	14		

• Cable outside diameter range to be inserted = $\phi d \sim \phi d - 1mm$

[Packing number ; No. 24]

Deliv-ery	Qty of cable	Item number	Cable outside diameter to be inserted ϕd	Connectable cable gland	Weight (g)
⊙	1	EM3GP24-8x1P	$\phi 8$	EM3BG2428	12
		EM3GP24-10x1P	$\phi 10$		11
		EM3GP24-12x1P	$\phi 12$		10
		EM3GP24-15x1P	$\phi 15$		9
⊙	2	EM3GP24-16x1P	$\phi 16$		9
		EM3GP24-4+5	$\phi 4, \phi 5$		12
		EM3GP24-4+13	$\phi 4, \phi 13$		9
		EM3GP24-5x2P	$\phi 5$		11
		EM3GP24-6x2P	$\phi 6$		12
		EM3GP24-7x2P	$\phi 7$		11
		EM3GP24-8x2P	$\phi 8$		11
		EM3GP24-9+13	$\phi 9, \phi 13$		9
⊙	3	EM3GP24-10x2P	$\phi 10$		9
		EM3GP24-11x2P	$\phi 11$		9
		EM3GP24-2x2P+6	$\phi 2, \phi 6$	12	
		EM3GP24-5x3P	$\phi 5$	11	
		EM3GP24-7x3P	$\phi 7$	10	
		EM3GP24-8x2P+12	$\phi 8, \phi 12$	9	
		EM3GP24-8+9+10	$\phi 8, \phi 9, \phi 10$	9	
⊙	4	EM3GP24-9x3P	$\phi 9$	9	
		EM3GP24-3+4x2P+5	$\phi 3, \phi 4, \phi 5$	11	
		EM3GP24-4x4P	$\phi 4$	11	
		EM3GP24-5x2P+7x2P	$\phi 5, \phi 7$	10	
		EM3GP24-5x4P	$\phi 5$	11	
		EM3GP24-6x3P+8	$\phi 6, \phi 8$	10	
		EM3GP24-6x4P	$\phi 6$	10	
		EM3GP24-6+7+8+11	$\phi 6, \phi 7, \phi 8, \phi 11$	9	
		EM3GP24-6 x 3P+8	$\phi 6, \phi 8$	8	
		EM3GP24-6+8x3P	$\phi 6, \phi 8$	9	
		EM3GP24-7x2P+9+10	$\phi 7, \phi 9, \phi 10$	8	
		EM3GP24-7x3P+8	$\phi 7, \phi 8$	9	
⊙	5	EM3GP24-7x4P	$\phi 7$	10	
		EM3GP24-8x4P	$\phi 8$	9	
		EM3GP24-8+9x3P	$\phi 8, \phi 9$	8	
		EM3GP24-2x2P+5x3P	$\phi 2, \phi 5$	11	
		EM3GP24-3x4P+7	$\phi 3, \phi 7$	11	
		EM3GP24-6x5P	$\phi 6$	10	
⊙	6	EM3GP24-5x6P	$\phi 5$	10	
		EM3GP24-4x9P	$\phi 4$	10	

MULTI - OPENING PACKING EM3GP

Table with columns: MATERIAL (NBR), FEATURE (IP67), ENVIRONMENT (RoHS), TEMPERATURE RANGE (Lowest -20°C ~ Highest 90°C), QTY (Min. Qty per Package)

MULTI - OPENING PACKING EM3GP

[Packing number ; No. 32]

Table with columns: Deliv-ery, Qty of cable, Item number, Cable outside diameter to be inserted, Connectable cable gland, Weight (g). Lists various EM3GP32 models and their specifications.

EM3BG3236

[Packing number ; No. 36]

Table with columns: Deliv-ery, Qty of cable, Item number, Cable outside diameter to be inserted, Connectable cable gland, Weight (g). Lists various EM3GP36 models and their specifications.

EM3BG3436 EM3BG3642

* Cable outside diameter range to be inserted = φd ~ φd - 1mm

MULTI - OPENING PACKING EM3GP

Table with columns: MATERIAL (NBR), FEATURE (IP67), ENVIRONMENT (RoHS), TEMPERATURE RANGE (Lowest -20°C ~ Highest 90°C), QTY (Min. Qty per Package)

MULTI - OPENING PACKING EM3GP

[Packing number ; No. 36]

Table with columns: Deliv-ery, Qty of cable, Item number, Cable outside diameter to be inserted, Connectable cable gland, Weight (g). Lists various EM3GP36 models and their specifications.

EM3BG3436 EM3BG3642

[Packing number ; No. 40]

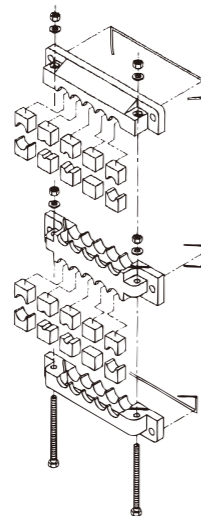
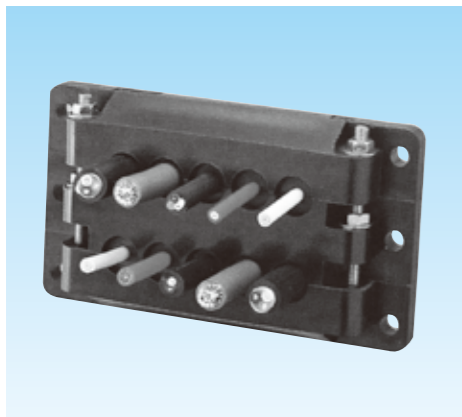
Table with columns: Deliv-ery, Qty of cable, Item number, Cable outside diameter to be inserted, Connectable cable gland, Weight (g). Lists various EM3GP40 models and their specifications.

EM3BG4042

* Cable outside diameter range to be inserted = φd ~ φd - 1mm

MULTIPLE CABLE CLAMPING KIT

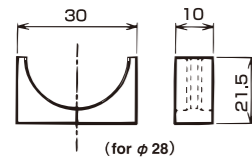
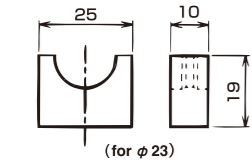
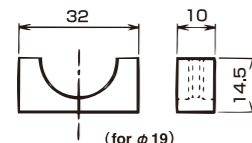
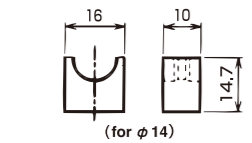
CONSTRUCTION



- MULTIPLE CABLE CLAMPING KIT
 - Designed for wiring boxes
 - A wider range of Packing is available
 - Excellent space efficiency for cable installation
 - Simple assembly method
 - Possible to assemble the kit after cable assemblies & wiring harnesses
 - Possible to reduce workload
 - Water resistance of the connection between Packing and cables; nearly IP65 (pressure 3kPa)
 - Water resistance of the connection between MULTIPLE CABLE CLAMPING KIT EMS and knockout of wiring boxes; Nearly IP65 (pressure 3kPa) (When Packing KGPA401 and M6 Box Nut KGPA402 are utilized)
- Note; MULTIPLE CABLE CLAMPING KIT EMS and Packing are separately available.
 - Refer to the list of Packing to choose one required when placing a order for MULTIPLE CABLE CLAMPING KIT EMS
 - Fix MULTIPLE CABLE CLAMPING KIT EMS to wiring boxes with Hexagon socket head cap screw (Torque; 5 ~ 5.5N · m)
 - Assemble Upper, Lower corner plate, and center plate with screwdriver KGTL216 (Torque; 2 ~ 2.3N · m)
 - MULTIPLE CABLE CLAMPING KIT for KEIFLEX is also available (Please look at the page for KEIFLEX)

PACKING

FEATURE	ENVIRONMENT	MATERIAL	COLOR	TEMPERATURE RANGE
Oil resistance	RoHS	NBR	Black	Lowest -20°C ~Highest 90°C



Deliv-ery	Connectable Multiple cable clamping kit's opening size	Item number	Cable outside diameter to be inserted	Set / Package
○	φ 14 of type EMS φ 14 of type EMS 2M All opening size of type EMS7M	EMSP0	Non-opening packing	30
○		EMSP2×3P	φ 2 x 3 pcs	20
○		EMSP4	φ 4 ~ φ 5	30
○		EMSP5	※ φ 5 ~ φ 6	30
○		EMSP6	φ 6 ~ φ 8	30
○		EMSP8	φ 8 ~ φ 10	30
○		EMSP10	φ 10 ~ φ 12	30
○		EMSP12	φ 12 ~ φ 13.5	30
○		EM19P13	φ 13.5 ~ φ 16	20
○		EM19P16	φ 16 ~ φ 18.5	20
○	φ 19 of type EMS	EM23P0	Non-opening packing	20
○		EM23P4	φ 4 ~ φ 6	20
○		EM23P7	φ 7 ~ φ 9	20
○		EM23P9	φ 9 ~ φ 11	20
○		EM23P11	φ 11 ~ φ 13	20
○		EM23P13	φ 13 ~ φ 15	20
○		EM23P15	φ 15 ~ φ 17	20
○		EM23P17	φ 17 ~ φ 19	20
○		EM23P19	φ 19 ~ φ 21	20
○		EM23P21	φ 21 ~ φ 22.5	20
○	φ 23 of type EMS 2M All opening size of type EMS 3M All opening size of type EMS 6M	EM28P0	Non-opening packing	10
○		EM28P8	φ 8 ~ φ 10	10
○		EM28P10	φ 10 ~ φ 12	10
○		EM28P12	φ 12 ~ φ 14	10
○		EM28P14	φ 14 ~ φ 16	10
○		EM28P16	φ 16 ~ φ 18	10
○		EM28P18	φ 18 ~ φ 20	10
○		EM28P20	φ 20 ~ φ 22	10
○		EM28P22	φ 22 ~ φ 24	10
○		EM28P24	φ 24 ~ φ 26	10
○	All opening size of EMS8M	EM28P26	φ 26 ~ φ 27.5	10

*Packing EMSP4 can be used for φ4~φ6 cable (but, in this case, water resistance is IP54), therefore, use Packing EMSP5 for φ5~φ6 cables for needs of water resistance nearly IP65 (pressure 3kPa)

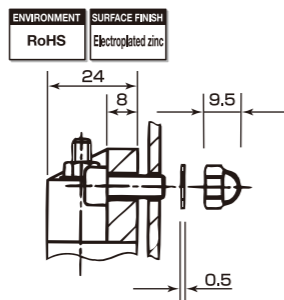
PACKING / BOX NUT FOR WATER RESISTANCE IMPROVEMENT



Item number	KGPA401
Qty / Package	50 pcs
Delivery	○



Item number	KGPA402
Qty / Package	50 pcs
Delivery	○



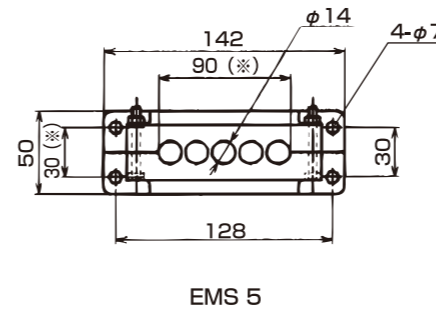
- With Packing KGPA401 for M6 and M6 Box Nut KGPA402, Water resistance of the connection between MULTIPLE CABLE CLAMPING KIT EMS and knockout of wiring boxes becomes Nearly IP65 (pressure 3kPa)
- The length of M6 bolt must be appropriate for the wall thickness of wiring boxes
- Torque must be 5.0 ~ 5.5N · m when fixing MULTIPLE CABLE CLAMPING KIT EMS to wiring boxes

MULTIPLE CABLE CLAMPING KIT

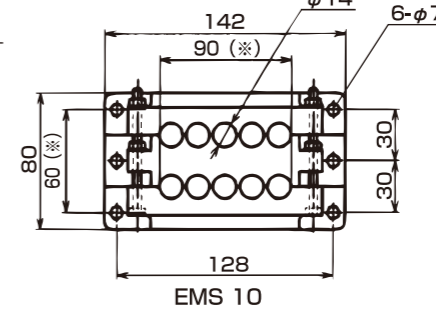
MULTIPLE CABLE CLAMPING KIT EMS (Cable max outside diameter to be inserted; 18.5mm)

MAIN MATERIAL	FEATURE	FEATURE	ENVIRONMENT	FLAMMABILITY	TEMPERATURE RANGE
PA6	IP65	Oil resistance	RoHS	UL94V0	Lowest -20°C ~Highest 90°C

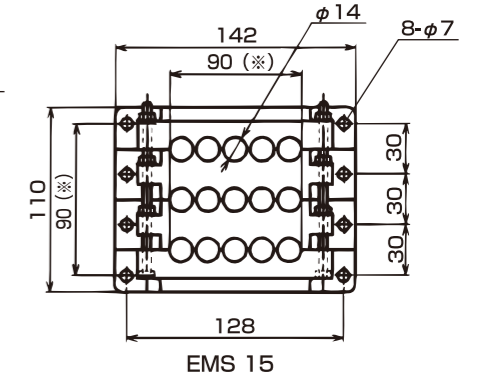
※Required size of opening on the wall of wiring boxes for cable installation



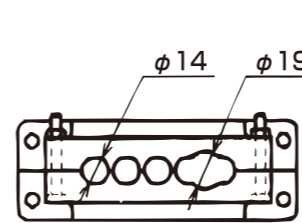
EMS 5



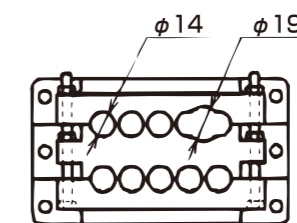
EMS 10



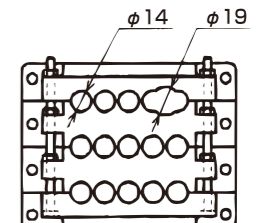
EMS 15



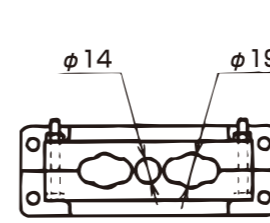
EMS 5 S1



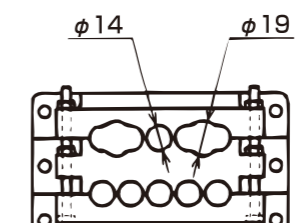
EMS 10 S1



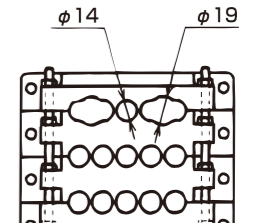
EMS 15 S1



EMS 5 S2



EMS 10 S2



EMS 15 S2

SCREWDRIVER



- Screwdriver
- Exclusively utilized for MULTIPLE CABLE CLAMPING KIT EMS

Item number	KGTL216	Delivery	○
-------------	---------	----------	---



Only for EMS black type 5,10,15

Color	Deliv-ery	Item number	Selective Packing	Deliv-ery	Item number	Selective Packing	Deliv-ery	Item number	Selective Packing	Deliv-ery	Item number	Selective Packing	Weight (g/pc)
Black (Regular type)	○	EMS 5		○	EMS 5 S1		③	EMS 5 S2		—	—		120
	○	EMS 10		○	EMS 10 S1		○	EMS 10 S2		③	EMS 10 S3		180
	○	EMS 15		○	EMS 15 S1		○	EMS 15 S2		③	EMS 15 S3		240
Light gray	○	EMS 5 LG		③	EMS 5 S1 LG	EMSP	③	EMS 5 S2 LG		—	—		120
	○	EMS 10 LG	EMSP	○	EMS 10 S1 LG	EMSP	○	EMS 10 S2 LG	EM19P	③	EMS 10 S3 LG	EM19P	180
	○	EMS 15 LG		○	EMS 15 S1 LG		○	EMS 15 S2 LG		○	EMS 15 S3 LG		240
Ivory	○	EMS 5 IV		○	EMS 5 S1 IV		③	EMS 5 S2 IV		—	—		120
	○	EMS 10 IV		③	EMS 10 S1 IV		○	EMS 10 S2 IV		○	EMS 10 S3 IV		180
	○	EMS 15 IV		③	EMS 15 S1 IV		③	EMS 15 S2 IV		○	EMS 15 S3 IV		240

• MOQ; Please check with our Sales dept.

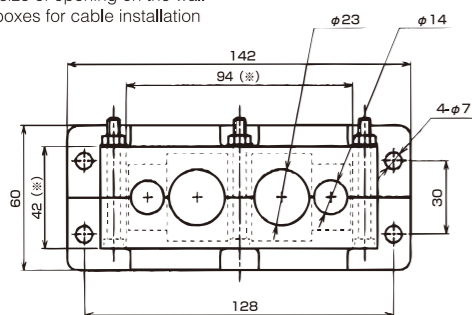
Contact us for information of product availability and delivery

MULTIPLE CABLE CLAMPING KIT

MAIN MATERIAL	FEATURE	FEATURE	ENVIRONMENT	FLAMMABILITY	TEMPERATURE RANGE
PA6	IP65	Oil resistance	RoHS	UL94V0	Lowest -20°C ~Highest 90°C

MULTIPLE CABLE CLAMPING KIT EMS2M (Cable max outside diameter to be inserted; 22.5mm)

※Required size of opening on the wall of wiring boxes for cable installation

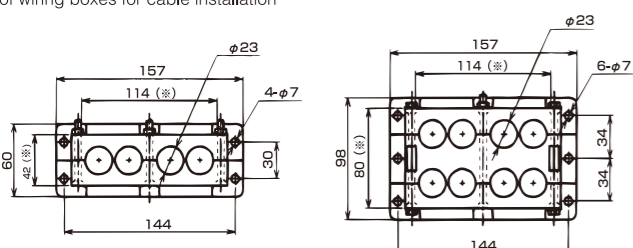


EMS2M4

Delivery	Item number	Color	Selective Packing	Weight (g/pc)	Qty / Package
○	EMS2M4	Black (Regular type)	EMSP EM23P	130	2
○	EMS2M4 LG	Light gray		130	2
○	EMS2M4 IV	Ivory		130	2

MULTIPLE CABLE CLAMPING KIT EMS3M (Cable max outside diameter to be inserted; 22.5mm)

※Required size of opening on the wall of wiring boxes for cable installation



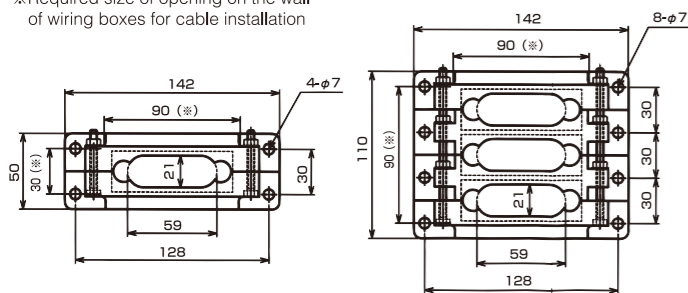
EMS3M4

EMS3M8

Delivery	Item number	Color	Selective Packing	Weight (g/pc)	Qty / Package
○	EMS3M4	Black (Regular type)	EM23P	140	2
○	EMS3M8			330	1
○	EMS3M4 LG	Light gray		140	2
○	EMS3M8 LG			330	1
○	EMS3M4 IV	Ivory		140	2
○	EMS3M8 IV			330	1

MULTIPLE CABLE CLAMPING KIT EMS4M

※Required size of opening on the wall of wiring boxes for cable installation



EMS4M

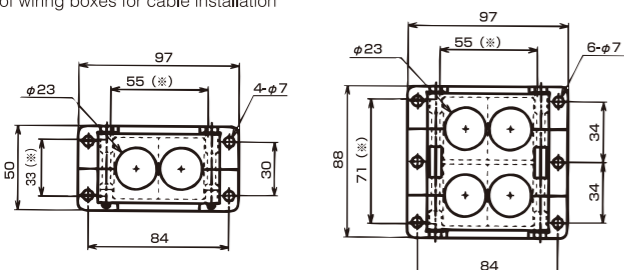
EMS4M3

- MULTIPLE CABLE CLAMPING KIT
- Designed for oval cables
- Packing: Custom-made

Delivery	Item number	Color	Selective Packing	Weight (g/pc)	Qty / Package
⑤	EMS4M	Black (Regular type)	Available on request	120	2
⑤	EMS4M3			240	1

MULTIPLE CABLE CLAMPING KIT EMS6M (Cable max outside diameter to be inserted; 22.5mm)

※Required size of opening on the wall of wiring boxes for cable installation



EMS6M2

EMS6M4

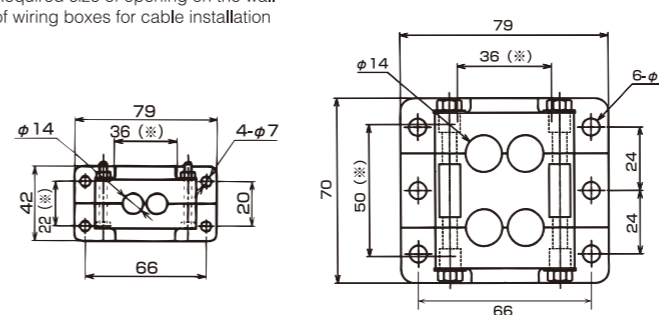
Delivery	Item number	Color	Selective Packing	Weight (g/pc)	Qty / Package
○	EMS6M2	Black (Regular type)	EM23P	80	2
○	EMS6M4			120	1
○	EMS6M2 LG	Light gray		80	2
○	EMS6M4 LG			120	1
○	EMS6M2 IV	Ivory		80	2
○	EMS6M4 IV			120	1

MULTIPLE CABLE CLAMPING KIT

MAIN MATERIAL	FEATURE	FEATURE	ENVIRONMENT	FLAMMABILITY	TEMPERATURE RANGE
PA6	IP65	Oil resistance	RoHS	UL94V0	Lowest -20°C ~Highest 90°C

MULTIPLE CABLE CLAMPING KIT EMS7M (Cable max outside diameter to be inserted; 13.5mm)

※Required size of opening on the wall of wiring boxes for cable installation



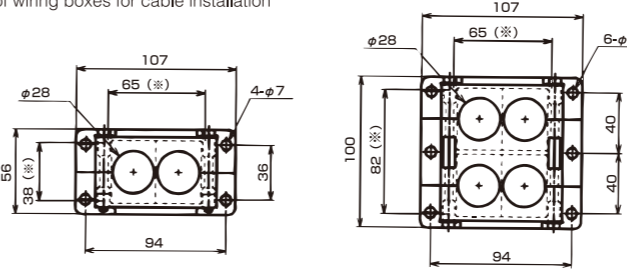
EMS7M2

EMS7M4

Delivery	Item number	Color	Selective Packing	Weight (g/pc)	Qty / Package
○	EMS7M2	Black (Regular type)	EMSP	70	3
○	EMS7M4			105	2
○	EMS7M2 LG	Light gray		70	3
○	EMS7M4 LG			105	2
○	EMS7M2 IV	Ivory		70	3
○	EMS7M4 IV			105	2

MULTIPLE CABLE CLAMPING KIT EMS8M (Cable max outside diameter to be inserted; 27.5mm)

※Required size of opening on the wall of wiring boxes for cable installation



EMS8M2

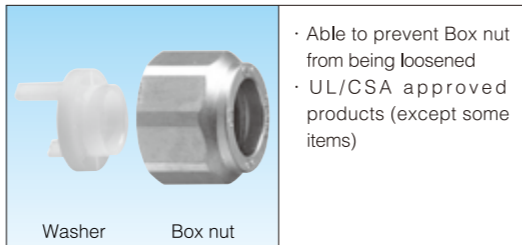
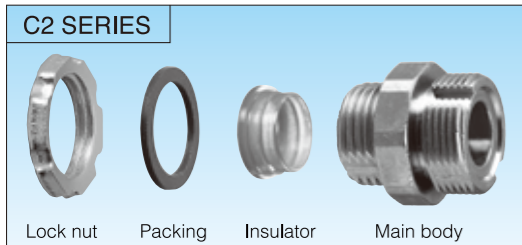
EMS8M4

Delivery	Item number	Color	Selective Packing	Weight (g/pc)	Qty / Package
○	EMS8M2	Black (Regular type)	EM28P	100	2
○	EMS8M4			180	1
○	EMS8M2 LG	Light gray		100	2
○	EMS8M4 LG			180	1

METALLIC CABLE GLAND

C2 SERIES

TYPE OF PACKING



NOTES

- CABLE GLAND
- Able to prevent Box nut from being loosened
- 2 kinds of Packing which enhance the water resistance of a joint between Cable gland and Knockout
- SPHC Lock Nut (limited to cable gland designed for knock out of wiring boxes)

UL/CSA

- UL/CSA standards apply only to Cable outside diameter 8mm or bigger size
- UL/CSA standards does not apply to Cable outside diameter 7mm or smaller sizes.
- NOTE: Although product types are awarded quality approvals/compliance by UL/CSA, some products are not marked with approvals/compliance (or not awarded approvals/compliance yet) because of their sizes. Please check with us should UL/CSA approvals/compliance be required.

INSTRUCTION FOR ASSEMBLY OF LOCK NUT

- When tightening LOCK NUT, moderate Torque is required. Contact us if the instruction is required.
- When UL / CSA applies to items on order, refer to 「ASSEMBLY INSTRUCTIONS」 attached to / enclosed in a shipping package

COLOR OF INSULATOR

- Red Insulator; limited to cable gland with Parallel pipe threads designed for knock out of wiring boxes)
- Blue Insulator; limited to cable gland with Metric threads designed for knock out of wiring boxes)

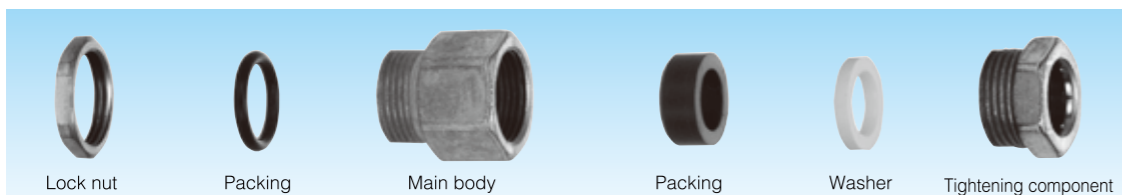
STAINLESS CABLE GLANDS

- Stainless (SUS304) Cable Gland is also available (Please look at a page for SANPIPE)

MATERIAL OF KEIGLAND

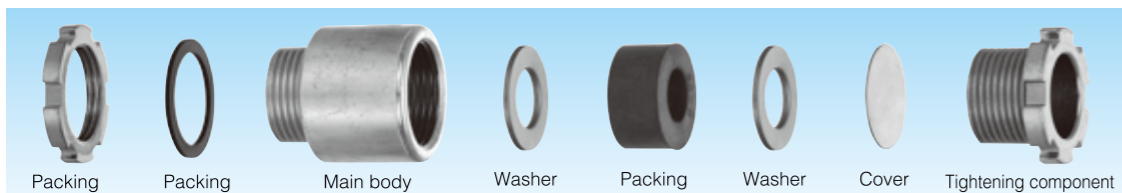
PART NAME	MATERIAL
Main body	ZDC
Packing	NBR
Washer	PA
Box nut	ZDC
Insulator	PA
Packing	NBR
Lock nut	SPHC

C7 SERIES



• Compact design

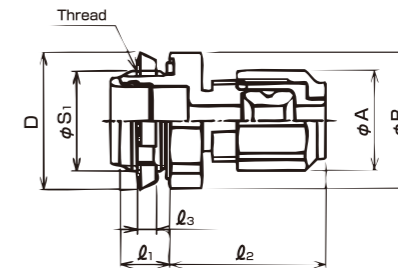
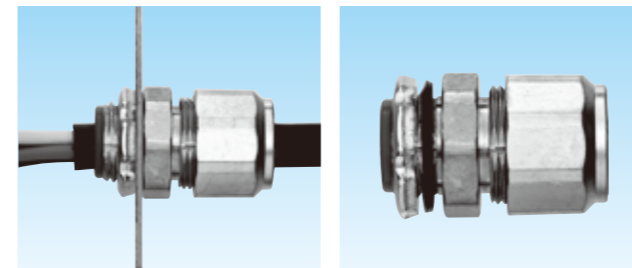
CF SERIES



• Marine watertight cable glands for enclosures of electric apparatus

CABLE GLAND FOR KNOCKOUT

PARALLEL PIPE THREAD - EXTERNAL THREAD



- Straight cable gland
- Designed for knockout of wiring boxes

PARALLEL PIPE THREAD - EXTERNAL THREAD



Delivery	Item number	Cable outside diameter to be inserted		Packing number	φ A	φ B D	l ₁	l ₂	l ₃	Thread JIS B 0202		Weight (g/pc)	Qty / Package
		Max.	Min.							φ S 1	Nominal size		
⊙	C2BG 06 12	6	3	6	21.0	24.0	10	33	3.0	16.6	G3/8	49	20
⊙	C2BG 06 16	6	3	6	21.0	29.0	10	33	3.8	20.9	G1/2	59	20
⊙	C2BG 08 12	8	4	8	23.6	24.0	10	35	3.0	16.6	G3/8	66	20
⊙	C2BG 08 16	8	4	8	23.6	29.0	10	35	3.8	20.9	G1/2	67	20
⊙	C2BG 08 16L12	8	4	8	23.6	29.0	12	35	3.8	20.9	G1/2	66	20
⊙	C2BG 08 22	8	4	8	23.6	36.6	12	35	3.8	26.4	G3/4	89	20
⊙	C2BG 08 28	8	4	8	23.6	44.9	14	35	4.5	33.2	G1	123	20
⊙	C2BG 10 16	10	6	10	26.1	29.0	10	35	3.8	20.9	G1/2	73	20
⊙	C2BG 12 16	12	8	12	28.2	29.0	10	35	3.8	20.9	G1/2	76	20
⊙	C2BG 12 22	12	8	12	28.2	36.6	12	35	3.8	26.4	G3/4	97	20
⊙	C2BG 12 28	12	8	12	28.2	44.9	14	35	4.5	33.2	G1	131	10
⊙	※1 C2BG 16 16	16	12	16	33.4	30.3	12	37	3.8	20.9	G1/2	94	20
⊙	C2BG 16 22	16	12	16	33.4	36.6	12	37	3.8	26.4	G3/4	115	20
⊙	C2BG 20 22	20	16	20	39.1	36.6	12	39	3.8	26.4	G3/4	133	20
⊙	C2BG 20 28	20	16	20	39.1	44.9	14	39	4.5	33.2	G1	171	20
⊙	C2BG 24 28	24	20	24	45.5	44.9	14	40	4.5	33.2	G1	200	10
⊙	C2BG 24 36	24	20	24	45.5	54.8	14	40	4.5	41.9	G1-1/4	235	10
⊙	※1 C2BG 27 28	※2 27	24	28	50.1	48.1	14	42	4.5	33.2	G1	224	10
⊙	C2BG 28 36	28	24	28	50.1	54.8	14	42	4.5	41.9	G1-1/4	261	10
⊙	C2BG 32 36	32	28	32	55.5	54.8	14	44	4.5	41.9	G1-1/4	282	10
⊙	※1 C2BG 36 36	36	32	36	60.5	58.3	14	45	4.5	41.9	G1-1/4	304	5
⊙	C2BG 36 42	36	32	36	60.5	62.9	16	45	5.0	47.8	G1-1/2	356	5
⊙	※1 C2BG 40 42	40	36	40	68.1	65.7	16	46	5.0	47.8	G1-1/2	414	5
⊙	C2BG 40 54	40	36	40	68.1	74.2	16	46	5.0	59.6	G2	472	5
⊙	※1 C2BG 42 42	※2 42	40	44	74.3	74.2	16	50	5.0	47.8	G1-1/2	468	5
⊙	C2BG 44 54	44	40	44	74.3	74.2	16	50	5.0	59.6	G2	498	5
⊙	C2BG 48 54	48	44	48	79.7	76.8	16	53	5.0	59.6	G2	562	5
⊙	※1 C2BG 52 54	52	48	52	85.2	82.0	16	57	5.0	59.6	G2	630	5

- ※1: Items marked with ※1 in the chart above are without Insulator
- ※2: By removing a sheath of a cable, items marked with ※2 in the chart above can be adapted for another outside diameter of a cable; φ 27 can be adapted for φ 28mm, φ 42 can be adapted for φ 44mm

METRIC THREAD - EXTERNAL THREAD



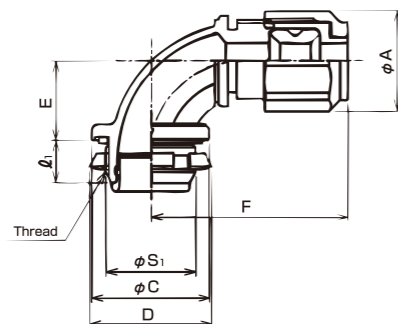
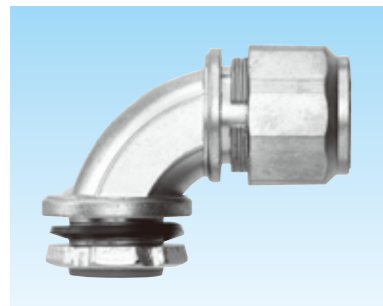
Delivery	Item number	Cable outside diameter to be inserted		Packing number	φ A	φ B D	l ₁	l ₂	l ₃	Thread JIS C 8463		Weight (g/pc)	Qty / Package
		Max.	Min.							φ S 1	Nominal size		
⊙	C2BM 06 16	6	3	6	21.0	24.0	10	33	3.0	15.9	M16×1.5	48	20
⊙	C2BM 08 16	8	4	8	23.6	24.0	10	35	3.0	15.9	M16×1.5	65	20
⊙	C2BM 08 20	8	4	8	23.6	29.0	10	35	3.6	19.9	M20×1.5	65	20
⊙	C2BM 10 16	10	6	10	26.1	28.2	10	35	3.0	15.9	M16×1.5	68	20
⊙	C2BM 10 20	10	6	10	26.1	29.0	10	35	3.6	19.9	M20×1.5	70	20
⊙	C2BM 12 20	12	8	12	28.2	29.0	10	35	3.6	19.9	M20×1.5	75	20
⊙	※1 C2BM 15 20	※2 15	12	16	33.4	30.3	10	37	3.6	19.9	M20×1.5	92	20
⊙	C2BM 16 25	16	12	16	33.4	36.6	10	37	3.6	24.9	M25×1.5	115	20

- ※1: Items marked with ※1 in the chart above are without Insulator
- ※2: By removing a sheath of a cable, items marked with ※2 in the chart above can be adapted for another outside diameter of a cable; φ 15 can be adapted for φ 16mm

90 DEGREE ANGLE STYLE CABLE GLAND FOR KNOCKOUT

MAIN MATERIAL	SURFACE FINISH	FEATURE	FEATURE	ENVIRONMENT	TEMPERATURE RANGE
ZDC2	Electroplated zinc	IP67	Hold up to vibration	RoHS	Lowest -20°C ~Highest 90°C

PARALLEL PIPE THREAD - EXTERNAL THREAD / METRIC THREAD - EXTERNAL THREAD



- Cable gland designed in 90 degree angle style
- Designed for knockout of wiring boxes

PARALLEL PIPE THREAD - EXTERNAL THREAD



Delivery	Item number	Cable outside diameter to be inserted		Packing number	φ A	φ C D	E	F	ℓ ₁	Thread JIS B 0202		Weight (g/pc)	Qty / Package
		Max.	Min.							φ S1	Nominal size		
⊙	C29BG 06 16	6	3	6	21.0	29	16.2	43	10.0	20.9	G1/2	62	20
⊙	C29BG 08 16	8	4	8	23.6	29	18.6	46	10.0	20.9	G1/2	76	20
⊙	C29BG 08 16L12	8	4	8	23.6	29	18.6	46	12.0	20.9	G1/2	80	20
⊙	C29BG 08 22	8	4	8	23.6	36	24.5	53	12.0	26.4	G3/4	108	20
⊙	C29BG 10 16	10	6	10	26.1	29	18.6	46	10.0	20.9	G1/2	80	20
⊙	C29BG 12 16	12	8	12	28.2	29	19.5	48	10.0	20.9	G1/2	96	20
⊙	C29BG 12 22	12	8	12	28.2	36	24.5	53	12.0	26.4	G3/4	115	20
⊙	※1 C29BG 16 16	※2 16	12	16	33.4	32.6	22.8	61	12.0	20.9	G1/2	159	20
⊙	C29BG 16 22	16				36	24.5	52	12.0	26.4	G3/4	134	10
⊙	C29BG 16 28	16	12	16	33.4	44	28.5	59	14.0	33.2	G1	179	10
⊙	C29BG 20 22	※2 20	16	20	39.1	36	22.8	63	12.0	26.4	G3/4	168	10
⊙	C29BG 20 28	20	16	20	39.1	44	28.5	61	14.0	33.2	G1	201	10
⊙	C29BG 24 28	24	20	24	45.5	44	28.5	60	14.0	33.2	G1	239	10
⊙	C29BG 36 42	36	32	36	60.5	61	40.6	75	16.0	47.8	G1-1/2	469	5

※1; Items marked with ※1 in the chart above are without Insulator

※2; Only a low adhesion & soft surface cable can be inserted into the items marked with ※2 in the chart above. Remove a sheath of a cable unless it is a low adhesion & soft surface one so that it can be inserted.

METRIC THREAD - EXTERNAL THREAD



Delivery	Item number	Cable outside diameter to be inserted		Packing number	φ A	φ C D	E	F	ℓ ₁	Thread JIS C 8463		Weight (g/pc)	Qty / Package
		Max.	Min.							φ S1	Nominal size		
—	C29BM 06 20	6	3	6									
—	C29BM 08 20	8	4	8									
—	C29BM 10 20	10	6	10									
—	C29BM 12 20	12	8	12									
—	※1 C29BM 16 20	※2 16	12	16									
—	C29BM 16 25	16	12	16									
—	※1 C29BM 20 25	※2 20	16	20									
—	C29BM 24 32	24	20	24									

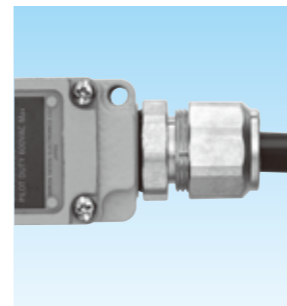
※1; Items marked with ※1 in the chart above are without Insulator

※2; Only a low adhesion & soft surface cable can be inserted into the items marked with ※2 in the chart above. Remove a sheath of a cable unless it is a low adhesion & soft surface one so that it can be inserted.

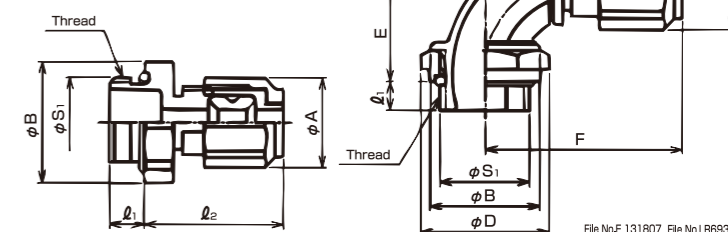
CABLE GLAND FOR ELECTRIC DEVICES

MAIN MATERIAL	SURFACE FINISH	FEATURE	FEATURE	ENVIRONMENT	TEMPERATURE RANGE
ZDC2	Electroplated zinc	IP67	Hold up to vibration	RoHS	Lowest -20°C ~Highest 90°C

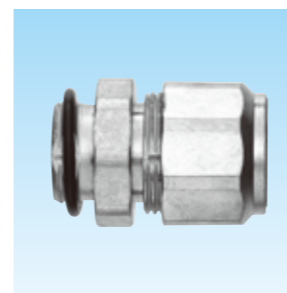
PARALLEL PIPE THREAD - EXTERNAL THREAD



- Cable gland
- Designed for electric devices such as Limit switch
- Design availability;
Straight type
90 degree angle style type



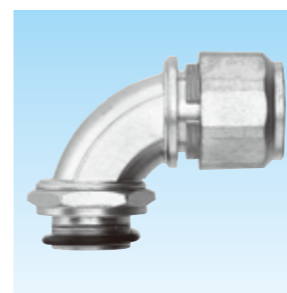
STRAIGHT STYLE



Delivery	Item number	Cable outside diameter to be inserted		Packing number	φ A	φ B	ℓ ₁	ℓ ₂	Thread JIS B 0202		Weight (g/pc)	Qty / Package
		Max.	Min.						φ S1	Nominal size		
⊙	C2OG 06 16	6	3	6	21.0	28.2	8	33	20.9	G1/2	50	20
⊙	C2OG 08 12	8	4	8	23.6	24.0	7	35	16.6	G3/8	40	20
⊙	C2OG 08 16	8	4	8	23.6	28.2	8	35	20.9	G1/2	44	20
⊙	C2OG 10 16	10	6	10	26.1	28.2	8	35	20.9	G1/2	64	20
⊙	C2OG 12 16	12	8	12	28.2	28.2	8	35	20.9	G1/2	52	20
⊙	C2OG 12 22	12	8	12	28.2	36.6	8	35	26.4	G3/4	84	20
⊙	C2OG 16 16	16	12	16	33.4	30.3	8	37	20.9	G1/2	70	20
⊙	C2OG 16 22	16	12	16	33.4	36.6	8	37	26.4	G3/4	81	20
⊙	C2OG 20 22	20	16	20	39.1	36.6	8	39	26.4	G3/4	120	20



90 DEGREE ANGLE STYLE

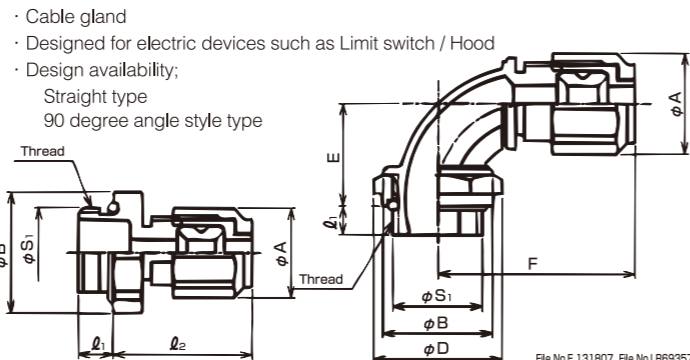
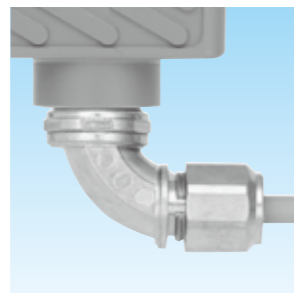
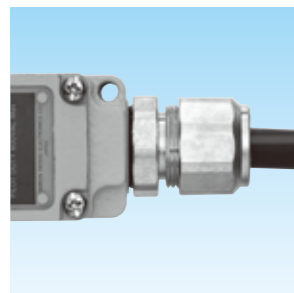


Delivery	Item number	Cable outside diameter to be inserted		Packing number	φ A	φ B D	E	F	ℓ ₁	Thread JIS B 0202		Weight (g/pc)	Qty / Package
		Max.	Min.							φ S1	Nominal size		
⊙	C29OG 08 16	8	4	8	23.6	30	23	46	8	20.9	G1/2	100	20
⊙	C29OG 10 16	10	6	10	26.1	30	23	46	8	20.9	G1/2	87	20
⊙	C29OG 12 16	12	8	12	28.2	30	24	48	8	20.9	G1/2	100	20
⊙	C29OG 16 16	16	12	16	33.4	32.6	29	61	8	20.9	G1/2	158	10

CABLE GLAND FOR ELECTRIC DEVICES

MAIN MATERIAL	SURFACE FINISH	FEATURE	FEATURE	ENVIRONMENT	TEMPERATURE RANGE
ZDC2	Electroplated zinc	IP67	Hold up to vibration	RoHS	Lowest -20°C ~Highest 90°C

METRIC THREAD - EXTERNAL THREAD



- Cable gland
- Designed for electric devices such as Limit switch / Hood
- Design availability;
Straight type
90 degree angle style type

STRAIGHT STYLE



Delivery	Item number	Cable outside diameter to be inserted		Packing number	φ A	φ B	l ₁	l ₂	Thread JIS C 8463		Weight (g/pc)	Qty / Package
		Max.	Min.						φ S ₁	Nominal size		
		○	C2OM 06 20						6	3		
○	C2OM 08 20	8	4	8	23.6	28.2	35	19.9	M20X1.5	56	20	
○	C2OM 10 16	10	6	10	26.1	24.0	8	35	15.9	M16X1.5	60	20
○	C2OM 10 20	10	6	10	26.1	28.2		35	19.9	M20X1.5	65	20
○	C2OM 12 20	12	8	12	28.2	28.2	8	35	19.9	M20X1.5	65	20
○	C2OM 15 20	※15	12	16	33.4	30.3		37	19.9	M20X1.5	79	20
○	C2OM 16 25	16	12	16	33.4	36.6	8	37	24.9	M25X1.5	93	20
○	C2OM 19 25	※19	16	20	39.1	36.6		39	24.9	M25X1.5	110	20
○	C2OM 20 32	20	16	20	39.1	44.9	8	39	31.9	M32X1.5	131	10
○	C2OM 24 32	24	20	24	45.5	44.9		40	31.9	M32X1.5	155	10
○	C2OM 26 32	※26	24	28	50.1	48.1	8	42	31.9	M32X1.5	185	10
○	C2OM 28 40	28	24	28	50.1	54.8		42	39.9	M40X1.5	205	10
○	C2OM 32 40	32	28	32	55.5	54.8	44	39.9	M40X1.5	224	10	

By removing a sheath of a cable, items marked with ※ in the chart above can be adapted for another outside diameter of a cable; φ 15 can be adapted for φ 16mm, φ 19 can be adapted for φ 20mm, φ 26 can be adapted for φ 28mm

90 DEGREE ANGLE STYLE



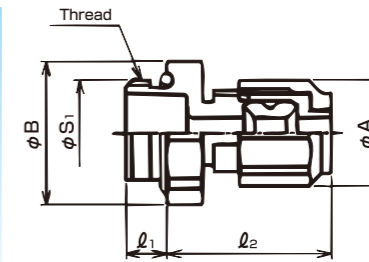
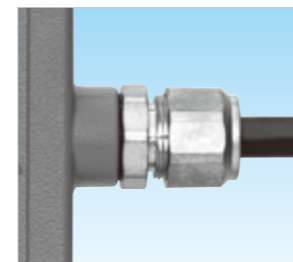
Delivery	Item number	Cable outside diameter to be inserted		Packing number	φ A	φ B D	E	F	l ₁	Thread JIS C 8463		Weight (g/pc)	Qty / Package
		Max.	Min.							φ S ₁	Nominal size		
		○	C29OM 08 20							8	4		
—	C29OM 09 16	※9	6	10									
○	C29OM 10 20	10	6	10	26.1	27.6	24	46	7	19.9	M20X1.5	88	20
○	C29OM 12 20	12	8	12	28.2	27.6	25	48	7	19.9	M20X1.5	95	20
—	C29OM 16 25	16	12	16									

By removing a sheath of a cable, items marked with ※ in the chart above can be adapted for another outside diameter of a cable; φ 9 can be adapted for φ 10mm

CABLE GLAND FOR ELECTRIC DEVICES

MAIN MATERIAL	SURFACE FINISH	FEATURE	FEATURE	ENVIRONMENT	TEMPERATURE RANGE
ZDC2	Electroplated zinc	IP67	Hold up to vibration	RoHS	Lowest -20°C ~Highest 90°C

Pg THREAD - EXTERNAL THREAD



- Straight cable gland
- Designed for electric devices such as Limit switch / Hood
- By utilizing Rock Nut RLPgS (separately available), C2OPg can be adapted for knockout of wiring boxes. In that case, the size of knockout must be very much the same as φ S₁ as indicated in the chart below so that water resistance can be kept good



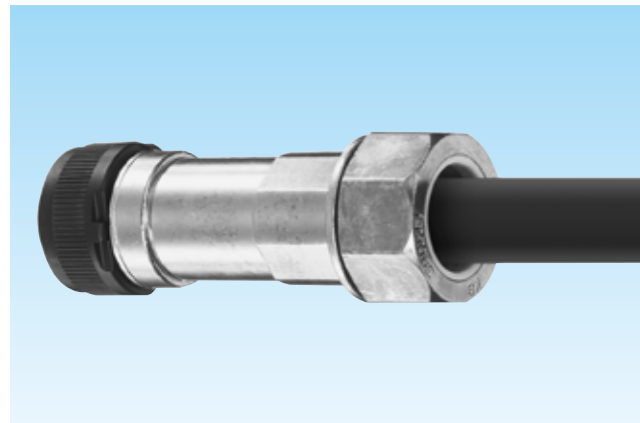
Delivery	Item number	Cable outside diameter to be inserted		Packing number	φ A	φ B	l ₁	l ₂	Thread DIN 40 430		Weight (g/pc)	Qty / Package
		Max.	Min.						φ S ₁	Nominal size		
		○	C2OPg 08 09						8	4		
○	C2OPg 08 11	18.6	Pg11	44	20							
○	C2OPg 08 13	8	4	8	23.6	28.2	8	35	20.4	Pg13.5	57	20
○	C2OPg 08 16								22.5	Pg16	45	20
○	C2OPg 08 21	8	4	8	23.6	36.6	8	35	28.3	Pg21	62	20
○	C2OPg 10 09								15.2	Pg9	63	20
○	C2OPg 10 11	10	6	10	26.1	28.2	6	35	18.6	Pg11	62	20
○	C2OPg 12 11								18.6	Pg11	45	20
○	C2OPg 12 13	12	8	12	28.2	28.2	8	35	20.4	Pg13.5	55	20
○	C2OPg 12 16								22.5	Pg16	55	20
○	C2OPg 12 21	12	8	12	28.2	28.2	8	35	28.3	Pg16	71	20
○	C2OPg 14 11								18.6	Pg11	66	20
○	C2OPg 14 13	※14	12	16	33.4	30.3	6	37	18.6	Pg11	66	20
○	C2OPg 16 13	20	16			20	39.1		30.3	8	20.4	Pg13.5
○	C2OPg 16 16	16	12	16	33.4	30.3	8	37	22.5	Pg16	65	20
○	C2OPg 16 21					28.3	Pg21		80	20		
○	C2OPg 16 29	16	12	16	33.4	44.9	9	37	37.0	Pg29	101	20
○	C2OPg 18 16					※18	16		20	39.1	36.6	8
○	C2OPg 20 21	20	16	20	39.1	36.6	8	39	28.3	Pg21	100	20
○	C2OPg 20 29					44.9	9		37.0	Pg29	110	20
○	C2OPg 23 21	※23	20	24	45.5	44.9	8	40	28.3	Pg21	110	10
○	C2OPg 24 29	24	20			44.9	9		37.0	Pg29	130	10
○	C2OPg 28 29	28	24	28	50.1	48.1	9	42	37.0	Pg29	154	10
○	C2OPg 31 29	※31	28	32	55.5	54.8	9	44	37.0	Pg29	163	10
○	C2OPg 32 36	32	28			54.8	9		47.0	Pg36	192	10

By removing a sheath of a cable, items marked with ※ in the chart above can be adapted for another outside diameter of a cable; φ 14 can be adapted for φ 16mm, φ 18 can be adapted for φ 20mm, φ 23 can be adapted for φ 24mm, φ 31 can be adapted for φ 32mm

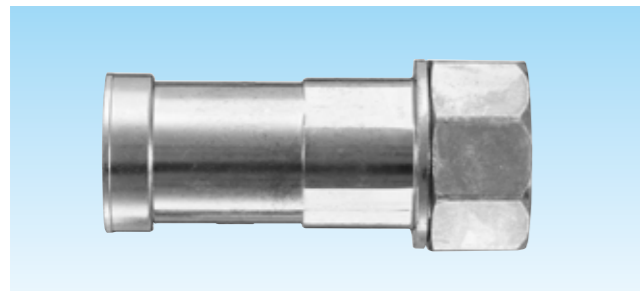
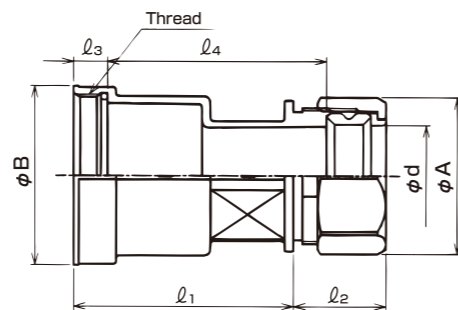
C SERIES COUPLING TYPE CABLE GLAND FOR MS CONNECTOR - LONGER MAIN BODY -

MAIN MATERIAL	SURFACE FINISH	FEATURE	ENVIRONMENT	TEMPERATURE RANGE
ZDC2	Electroplated zinc	IP67	RoHS	Lowest -20°C ~Highest 90°C

FOR MS CONNECTOR (No backshell type)



- Coupling type of C SERIES Cable gland
- Designed for MS connector (No backshell type).
- Longer main body (Refer to l_4 in the chart)
- MS connector wiring work can be done more efficiently
- Must be fully tightened on MS connector with a tool (Recommended tool; SUPERTOOL MFT68A)
- New product (under development):
Coupling type of C2 SERIES Cable gland with longer main body designed for MS connector (No backshell type).(Item number; C2KD※※L)



Delivery	Item number	Cable outside diameter to be inserted		Packing number	ϕA	ϕB	ϕd	l_1	l_2	l_3	l_4	Connectable MS connector		Weight (g/pc)	Qty / Package
		Max.	Min.									Shell size	Thread ASME B1.1		
○	CK2D 16 18	16	12	16	30.9	30.0	16.2	65	24	7.5	65.3	18	1-20 UNEF-2B	123	10
○	CK2D 16 20											20	1-1/8-18 UNEF-2B	131	10
○	CK2D 20 20	20	16	20	36.5	36.3	20.2	65	27	7.5	66.2	20	1-1/8-18 UNEF-2B	150	10
○	CK2D 20 22											22	1-1/4-18 UNEF-2B	159	10
○	CK2D 20 24	24	20	24	42.1	39.5	24.2	65	28	10.0	63.7	24	1-3/8-18 UNEF-2B	171	10
○	CK2D 24 20											20	1-1/8-18 UNEF-2B	183	10
○	CK2D 24 22	24	20	24	42.1	36.3	24.2	66	28	7.5	67.1	22	1-1/4-18 UNEF-2B	186	10
○	CK2D 24 28											28	1-5/8-18 UNEF-2B	213	10
○	CK2D 24 32	28	24	28	47.1	52.4	27.9	66	30	10.0	66.0	32	1-7/8-16 UN-2B	251	10
○	CK2D 28 24											24	1-3/8-18 UNEF-2B	216	5
○	CK2D 28 32	28	24	28	47.1	52.4	28.2	65	30	10.0	64.5	24	1-3/8-18 UNEF-2B	216	5
○	CK2D 28 36											36	2-1/8-16 UN-2B	364	5
○	CK2D 32 28	32	28	32	51.4	46.1	32.4	65	32	10.0	64.5	28	1-5/8-18 UNEF-2B	362	5
○	CK2D 32 36											36	2-1/8-16 UN-2B	438	5
○	CK2D 36 36	36	32	36	56.9	58.7	36.4	65	33	12.0	62.4	36	2-1/8-16 UN-2B	414	5



File No.E 131807 File No.LR69357
QUALITY STANDARD QUALITY STANDARD

Delivery	Item number	Cable outside diameter to be inserted	Packing number	ϕA	ϕB	l_1	l_2	l_3	Connectable MS connector		Weight (g/pc)							
○	08 10	8	4	8	23.6	12.8	28	9.5	10SL/12S	5/8-24UNEF-2B	32							
③	08 14								14S	3/4-20UNEF-2B	37							
③	08 16								16/16S	7/8-20UNEF-2B	42							
○	08 18								18	1-20UNEF-2B	44							
○	08 20								20/22	1-3/16-18UNEF-2B	55							
○	08 24								24/28	1-7/16-18UNEF-2B	73							
○	12 10	12	8	12	28.2	12.8	28	9.5	10SL/12S	5/8-24UNEF-2B	39							
○	12 14								14S	3/4-20UNEF-2B	44							
○	12 16								16/16S	7/8-20UNEF-2B	46							
○	12 18								18	1-20UNEF-2B	50							
○	12 20								20/22	1-3/16-18UNEF-2B	60							
○	12 24								24/28	1-7/16-18UNEF-2B	81							
☆	16 14	16	12	16	33.4	12.8	29	9.5	14S	3/4-20UNEF-2B	79							
③	16 16								16/16S	7/8-20UNEF-2B	55							
○	16 18								18	1-20UNEF-2B	60							
○	16 20								20/22	1-3/16-18UNEF-2B	70							
○	16 24								24/28	1-7/16-18UNEF-2B	75							
③	16 32								32	1-3/4-18UNS-2B	115							
○	20 18	20	16	20	39.1	12.8	31	9.5	18	1-20UNEF-2B	104							
○	20 20								20/22	1-3/16-18UNEF-2B	85							
○	20 24								24/28	1-7/16-18UNEF-2B	95							
③	20 32								32	1-3/4-18UNS-2B	93							
③	20 36								36	2-18UNS-2B	154							
○	24 20								24	20	24	45.5	12.8	32	9.5	20/22	1-3/16-18UNEF-2B	102
○	24 24	24/28	1-7/16-18UNEF-2B	110														
○	24 32	32	1-3/4-18UNS-2B	130														
○	24 36	36	2-18UNS-2B	149														
③	28 20	28	24	28	50.1	12.8	34	9.5								20/22	1-3/16-18UNEF-2B	130
○	28 24															24/28	1-7/16-18UNEF-2B	130
③	28 32								32	1-3/4-18UNS-2B	150							
○	28 36								36	2-18UNS-2B	160							
③	32 24								32	28	32	55.5	12.8	36	9.5	24/28	1-7/16-18UNEF-2B	143
○	32 32															32	1-3/4-18UNS-2B	162
○	32 36	36	32	36	60.5	16.0	37	11.0	36	2-18UNS-2B	177							
③	36 36								36	2-18UNS-2B	227							

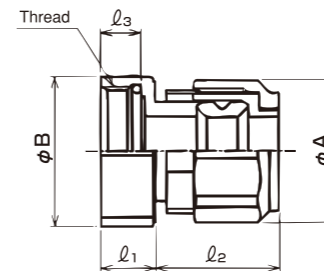
• MOQ; Please check with our Sales dept

MAIN MATERIAL	SURFACE FINISH	FEATURE	TEMPERATURE RANGE
Brass	Electroplated zinc	IP67	Lowest -50°C ~Highest 150°C

FOR MS CONNECTOR (No backshell type)

MAIN MATERIAL	SURFACE FINISH	FEATURE	FEATURE	ENVIRONMENT	TEMPERATURE RANGE
ZDC2	Electroplated zinc	IP67	Hold up to vibration	RoHS	Lowest -20°C ~Highest 90°C

FOR MS CONNECTOR (No backshell type)



- Coupling type of Cable gland
- Designed for MS connector (Backshell assembled type).
- Must be fully tightened on MS connector with a tool (Recommended tool; SUPERTOOL MFT68A)

HUB

TypeRHU



- Hub (Type; RHU)
- Designed to extend the Main body of C2KM
- MS connector wiring work can be done more efficiently
- Please look at a page for SANPARTS for more information.

Contact us for information of product availability and delivery

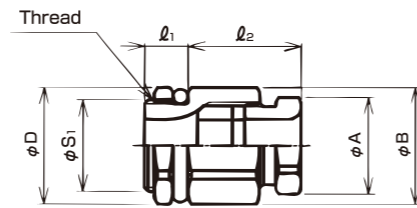
C7 SERIES COMPACT - STYLE CABLE GLAND FOR KNOCKOUT

MAIN MATERIAL	SURFACE FINISH	FEATURE	ENVIRONMENT	TEMPERATURE RANGE
ZDC2	Electroplated zinc	IP67	RoHS	Lowest -20°C ~Highest 90°C

METRIC THREAD - EXTERNAL THREAD



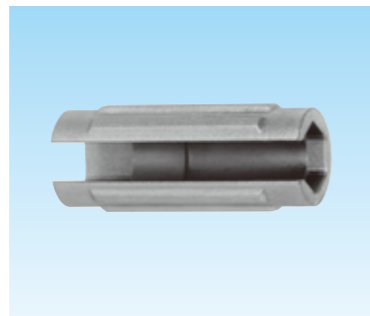
- Straight cable gland
- Designed for knockout of wiring boxes
- Compact design



Delivery	Item number	Cable outside diameter to be inserted		φ A	φ B φ D	l ₁	l ₂	Thread JIS B 0207		Weight (g/pc)	Qty / Package
		Max.	Min.					φ S1	Nominal size		
⊙	C7BM 06 15	6	4	15.5	18.8	7.0	19	14.9	M15X1	21	20
⊙	C7BM 08 15	8	6	15.5	18.8	7.0	19	14.9	M15X1	21	20

MAIN MATERIAL	SURFACE FINISH	ENVIRONMENT	TEMPERATURE RANGE
ZDC2	Electroplated zinc	RoHS	Lowest -50°C ~Highest 150°C

TOOL FOR C7BM



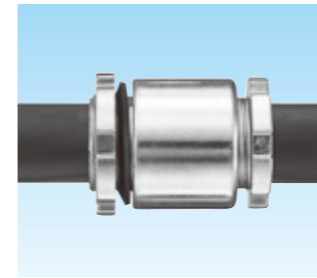
- Tool designed to tighten up Cable gland Type C7BM
- Should installation of Cable gland be done in a narrow space, KGTL264 comes in useful

Delivery	Item number	Connectable Cable gland	Weight (g/pc)	Qty / Package
⊙	KGTL264	C7BM 06 15 C7BM 08 15	69	1

MARINE WATERTIGHT CABLE GLAND FOR ENCLOSURE OF ELECTRIC APPARATUS

MAIN MATERIAL	SURFACE FINISH	FEATURE	ENVIRONMENT	TEMPERATURE RANGE
ZDC2	Electroplated zinc	IP66	RoHS	Lowest -20°C ~Highest 90°C

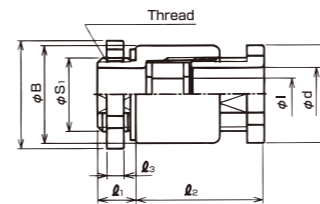
PARALLEL PIPE THREAD - EXTERNAL THREAD



- Marine watertight cable glands for enclosures of electric apparatus

- Corresponds to JIS F 8801
- To be supplied with Metal patch (inside CFBG)

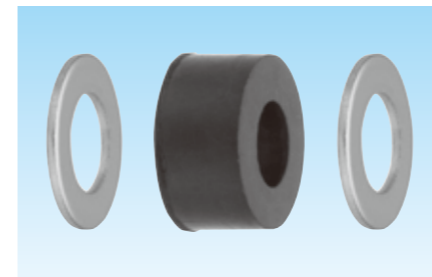
QUALITY STANDARD
JIS F 8801



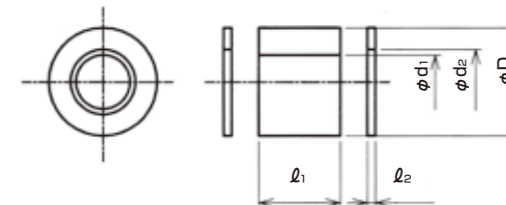
Delivery	Item number	Cable outside diameter to be inserted		φ A φ B	φ C	φ d	φ I	l ₁	l ₂	l ₃	Thread JIS B 0202		Weight (g/pc)	Qty / Package
		Max.	Min.								φ S1	Nominal size		
⊙	CFBG 15a	9	8	28.0	31.0	15.0	9.0	11.0	37	5.0	20.9	G1/2	97	10
⊙	CFBG 15b	10	9				10.0						96	
⊙	CFBG 15c	11	10				11.0						96	
⊙	CFBG 20a	12	11	34.0	37.0	20.0	12.0	11.0	41	5.0	26.4	G3/4	138	10
⊙	CFBG 20b	13	12				13.0						141	
⊙	CFBG 20c	15	13				15.0						139	
7	CFBG 25a	16	15	42.0	45.0	25.0	16.0	11.0	47	6.0	33.2	G1	234	10
7	CFBG 25b	18	16				18.0						227	
7	CFBG 25c	20	18				20.0						220	
3	CFBG 30a	22	20	50.0	56.0	30.0	22.0	12.0	51	6.0	41.9	G1-1/4	387	5
⊙	CFBG 30b	24	22				24.0						385	
7	CFBG 30c	26	24				26.0						381	
3	CFBG 35a	28	26	56.0	63.0	35.0	28.0	12.0	53	6.0	47.8	G1-1/2	457	5
3	CFBG 35b	30	28				30.0						454	
7	CFBG 40a	32	30				32.0						396	
7	CFBG 40b	34	32	40.0	388									

MATERIAL
CR

PACKING



- CR Packing for CFBG
- To be supplied with Washer

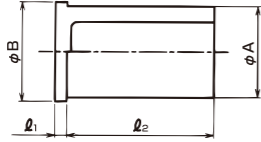
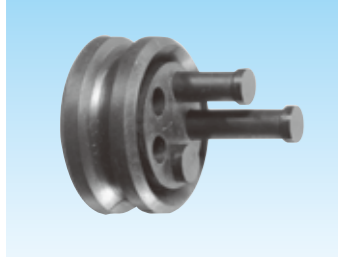


Delivery	Item number	Cable outside diameter to be inserted		φ d ₁	φ d ₂	φ D	l ₁	l ₂	Weight (g/pc)	Qty / Package
		Max.	Min.							
⊙	CF(GP) 15a	9	8	9	10	18	9	1.6	6	1
⊙	CF(GP) 15b	10	9	10	11				6	1
⊙	CF(GP) 15c	11	10	11	12				5	1
5	CF(GP) 20a	12	11	12	13	23	12	1.6	12	1
5	CF(GP) 20b	13	12	13	15				10	1
5	CF(GP) 20c	15	13	15	17				9	1
5	CF(GP) 25a	16	15	16	18	29	14	2	21	1
5	CF(GP) 25b	18	16	18	20				18	1
5	CF(GP) 25c	20	18	20	22				15	1
5	CF(GP) 30a	22	20	22	24	38	15	2	36	1
5	CF(GP) 30b	24	22	24	26				32	1
5	CF(GP) 30c	26	24	26	28				28	1
5	CF(GP) 35a	28	26	28	30	44	16	2	46	1
⊙	CF(GP) 35b	30	28	30	32				40	1
⊙	CF(GP) 40a	32	30	32	34				34	1
⊙	CF(GP) 40b	34	32	34	36	44	16	2	29	1

PLUG

MAIN MATERIAL	COLOR	FEATURE	ENVIRONMENT	ENVIRONMENT	FLAMMABILITY	TEMPERATURE RANGE
PA6	Black	Oil resistance	HALOGEN FREE	RoHS	UL94V0	Lowest -20°C ~Highest 100°C

FOR MULTI - OPENING PACKING



· Plug designed to block unused opening(s) of Multi - Opening Packing

Deliv-ery	Item number	Size of opening	ϕA	ϕB	l_1	l_2	Weight (g/pc)	Qty / Package
○	EPU 02	$\phi 2$	2.0	3.0	1.5	18.6	0.1	5
○	EPU 03	$\phi 3$	3.0	4.0			0.2	5
○	EPU 04	$\phi 4$	4.0	5.0			0.4	50
○	EPU 05	$\phi 5$	5.0	6.0			0.5	50
○	EPU 06	$\phi 6$	6.0	7.0			0.7	50
○	EPU 07	$\phi 7$	7.0	8.0			1.0	50
○	EPU 08	$\phi 8$	8.0	9.0			1.0	50
○	EPU 09	$\phi 9$	9.0	10.0			1.2	50
○	EPU 10	$\phi 10$	10.0	11.0			1.3	10
○	EPU 11	$\phi 11$	11.0	12.0			1.5	10
○	EPU 12	$\phi 12$	12.0	13.0			1.7	10
○	EPU 13	$\phi 13$	13.0	14.0			2.0	5
○	EPU 14	$\phi 14$	14.0	15.0			3.2	5
○	EPU 15	$\phi 15$	15.0	16.0			3.2	5
○	EPU 16	$\phi 16$	16.0	17.0			2.7	5
○	EPU 17	$\phi 17$	17.0	18.0			2.9	5
○	EPU 18	$\phi 18$	18.0	19.0			3.2	5
○	EPU 19	$\phi 19$	19.0	20.0			5.6	5
○	EPU 20	$\phi 20$	20.0	21.0			5.4	5

KEIFLEX

SANFLEKI
ROBO

KEICLAND

POWER
GODZILLA

PLICA TUBE

SANPIPE

GRIPLOK

SANPARTS

SANCABLE

SANCLUBE

KEIFLEX

SANFLEKI
ROBO

KEICLAND

POWER
GODZILLA

PLICA TUBE

SANPIPE

GRIPLOK

SANPARTS

SANCABLE

SANCLUBE